

Another says woman was 'screaming and kicking'

Defendant claims alleged rape victim consented to sex



Defense attorney Ken Sullivan shows photograph of marks on the body of the alleged victim in the Big Dan rape trial to New Bedford Police Detective Sandra Grace. Testimony for the defense has begun.

By Linda Cormon United Press International

FALL RIVER, Mass. — One of six men charged with gang-raping a woman on a barroom pool table will testify she consented to have sex with him in the tavern and protested only when other men tried to join in, a defense lawyer said.

Defendant Daniel Silvia was expected to testify today in one of two trials in the March 6, 1983, incident at Big Dan's Tavern in New Bedford, Mass. In opening arguments Tuesday, defense lawyer Edward Harrington said the case he would present — highlighted by Silvia's testimony — would show the woman consented to have sex with Silvia and that his client acted alone.

Other bar patrons began laughing and trying to intervene and only then did the woman begin to protest, crying. "Only him, only him," referring to Silvia, Harrington said. All six defendants are charged with aggravated rape. The woman, a 22-year-old mother of two, has testified she was dragged to a pool table and gang-raped while other customers and the bartender ignored her pleas for help.

When other men tried to intervene, Silvia tried to get off the woman, but she "had his arms around him and he couldn't get up," Harrington said. She then jumped up, wrapping her arms and legs around him and pleaded with Silvia to take her home, said Harrington. Silvia refused, saying he lived with his parents, and the woman ran out of the bar. Earlier Tuesday, a police officer testified that another defendant

Clean up, paint up, fix up your home... special supplement inside ... page 11

Sauers' dream is in lots of pieces ... page 11



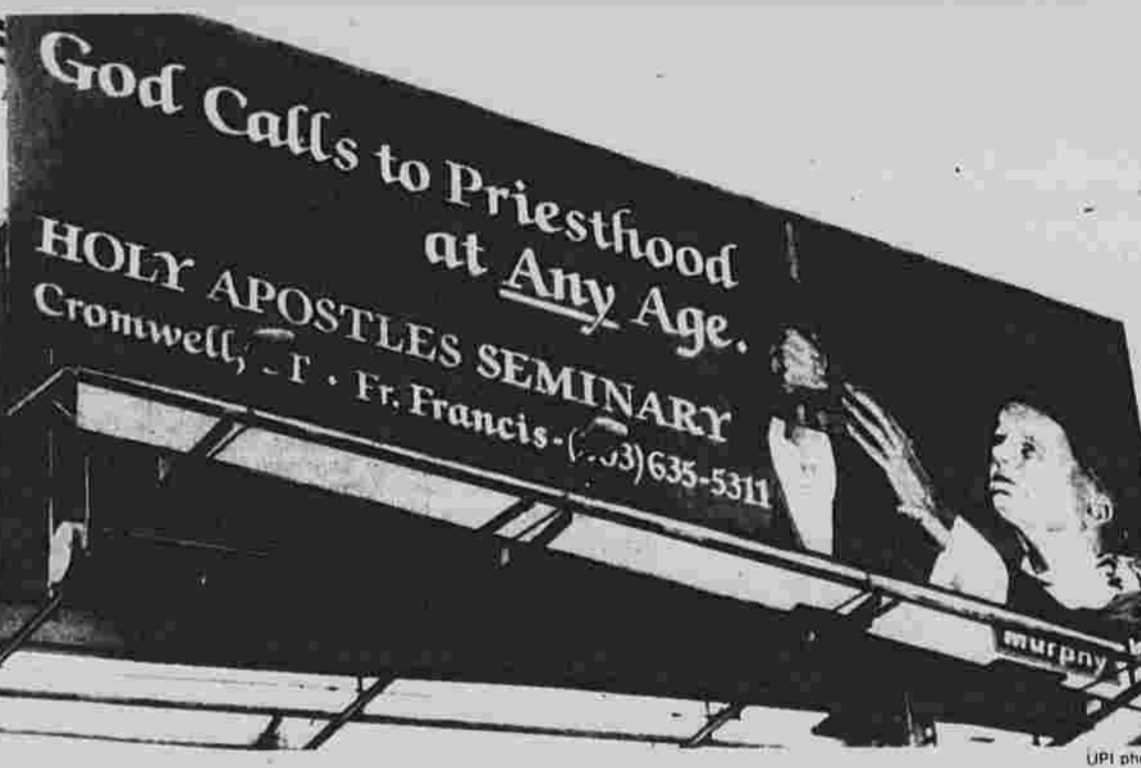
East cagers region champs ... page 15

Manchester Herald

Manchester, Conn. Thursday, March 15, 1984 Single copy: 25¢

Ice storm melts away

Warming temperatures today thawed ice, melted snow and provided some relief from a bitter ice storm that claimed two lives and deprived 55,000 utility customers of power in its two-day sweep across Connecticut.



This 50-by-15-foot billboard seeking to fill the need for priests in the Roman Catholic church is seen daily by thousands of Connecticut residents and motorists passing through the state. Located in Bridgeport, the billboard faces motorists heading west on Interstate 95, the Connecticut Turnpike.

Catholic Church begins seeking older candidates for priesthood

Second Career Vocation Project. It's an insidious mindset where a youngster is told only he can be a priest. That's nonsense. The only resource we have available is that older candidate. We could put an end to this crisis in two to four years," Fajella said.

Trooper, constables suggested

ANDOVER — The commander of the state police barracks that provides police protection to Andover has recommended the town hire a resident trooper and set up a part-time constabulary under the trooper as the solution to a recent juvenile crime wave.

REAL ESTATE THIS WEEK

featuring... BLANCHARD & ROSSETTO brings you "Quality you can trust" CHFA APPROVED 646-2482 6 room colonial that offers a well designed floor plan for modern living.

ANDOVER BE NATURE'S NEIGHBOR \$89,500 Enjoy the seasons on this acre lot surrounded by trees and plants.

MANCHESTER \$116,900 Explore the possibility of owning this beautiful 1 year old Duplex.

MANCHESTER \$135,900 DESIRABLE LOCATION is only one of the many outstanding features of this luxurious 8 room Colonial.

South Windsor New listing, immaculate 7 room Raised Ranch, oversized family room, 3 bedrooms, fireplace, built-ins, Central Air Conditioning, 2 car garage, large lot, good location. \$99,500

Sentry REAL ESTATE SERVICES EVALUATION 223 East Center St., Manchester 643-4080

MANCHESTER Completely modernized 5 room Cape with huge enclosed sunporch. Aluminum siding, park likeyard, garage. Immediate occupancy. \$68,900.

CHFA FINANCING AVAILABLE MANCHESTER Under construction, Brand 6 room new Cape on quiet street, fireplace, nice yard with bushes. Pick your colors! \$79,900.

CONDOMINIUM QUIET LIVING AND CONVENIENTLY LOCATED. First time on market by original owner. Large, spacious, 3 bedroom, 2 1/2 bath Townhouse. Extremely well maintained. Large Country kitchen. Gracious living room. Full basement. Garage and storage. Reasonably priced, \$80's.

U&R REALTY CO. 643-2692 Robert D. Murdock, Realtor

MANCHESTER Under construction, Brand 6 room new Cape on quiet street, fireplace, nice yard with bushes. Pick your colors! \$79,900.

STRANO REAL ESTATE 156 East Center Street 647-"SOLD"

CHFA OK Great buy in the low 50's. Modern bath and kitchen! 646-2482

CHFA OK 3 bedroom remodeled colonial with 2 car garage. 60's 646-2482

CHFA OK 8 room Cape with new kitchen. Recently painted. Garage. 60's. 646-2482

CHFA OK An ERA BEST BUY! 6 rooms with fireplace and garage. 60's 646-2482

CHFA OK 6 room Cape with new kitchen. Recently painted. Garage. 60's. 646-2482

The Gallery OF HOMES D.W. FISH REALTY CO. 243 Main St., Manchester 643-1591 Vernon Circle, Vernon 872-9153

Income Property Two Family 74,900 Manchester 585 two family with 2 bedrooms, kitchen with pantry and dining rm. in each. Full basement, walk-up attic, 2 car attached garage. Convenient location.

BLANCHARD & ROSSETTO, INC. REALTORS 189 WEST CENTER STREET (Corner of McKee) 646-2482

Ice storm melts away

On Wednesday the crews spent the day pushing slush around, but Ringstone said it was more water than slush. The full crew stopped at about 3:30 p.m., but a smaller group went back to work from about 7 p.m. to midnight with the sanding operation.

Catholic Church begins seeking older candidates for priesthood

There are an estimated 51 million Roman Catholics in the United States and 37,000 priests. The church in Connecticut serves about 625,000 Catholics with roughly 500 parish priests. Death and retirement continue to drain the priesthood, and Fajella said.

Trooper, constables suggested

Merrill said records show that state police were called to investigate only a dozen crimes in Andover in the first 10 weeks of 1984, which is average for the town, according to the state's statistics. But he admitted police have evidence of a substantial "youth problem" in Andover.

Delaware, Glenn fading fast

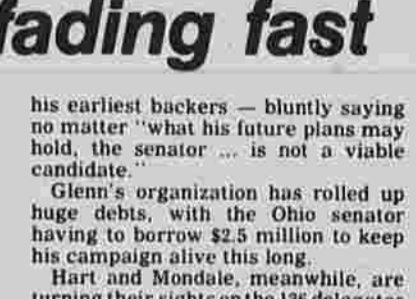
A heavy voter turnout in Delaware has handed Walter Mondale his easiest win in the race for the Democratic nomination, although all the party's top presidential aspirants skipped campaigning for the state's caucuses.

'Incredible' surgery may help Bolton woman

The Reopells that Miss Reoppel has a 65 percent chance of success with the same surgery. During the operation, electrodes are implanted in the spine. If the operation is successful, the electrodes eventually perform the work of the damaged nerves.

Inside Today

204 pages, 2 sections Advice... 12 Lottery... 20 Arad Town... 7 Obituaries... 10 Business... 10 Opinion... 10 Classified... 10 People... 10 Comics... 10 Entertainment... 10 Television... 10 Sports... 10 Incredibly... 10

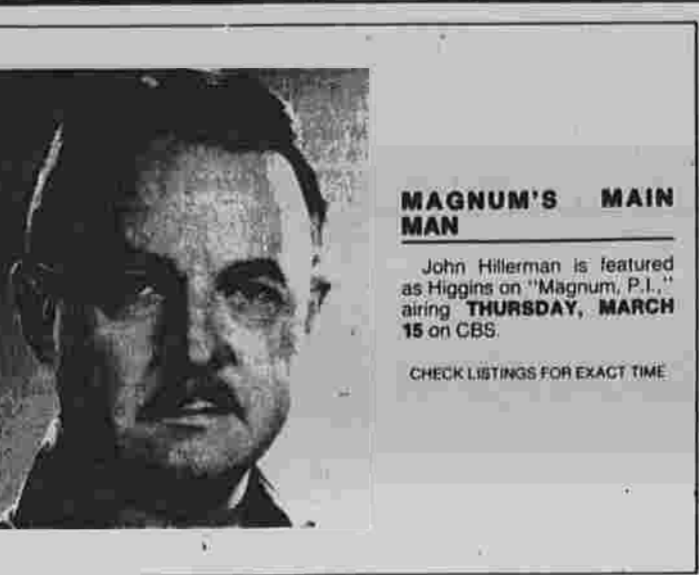


SUSANNE REOPPELL ... there's new hope

15 M A R 15

Thursday TV

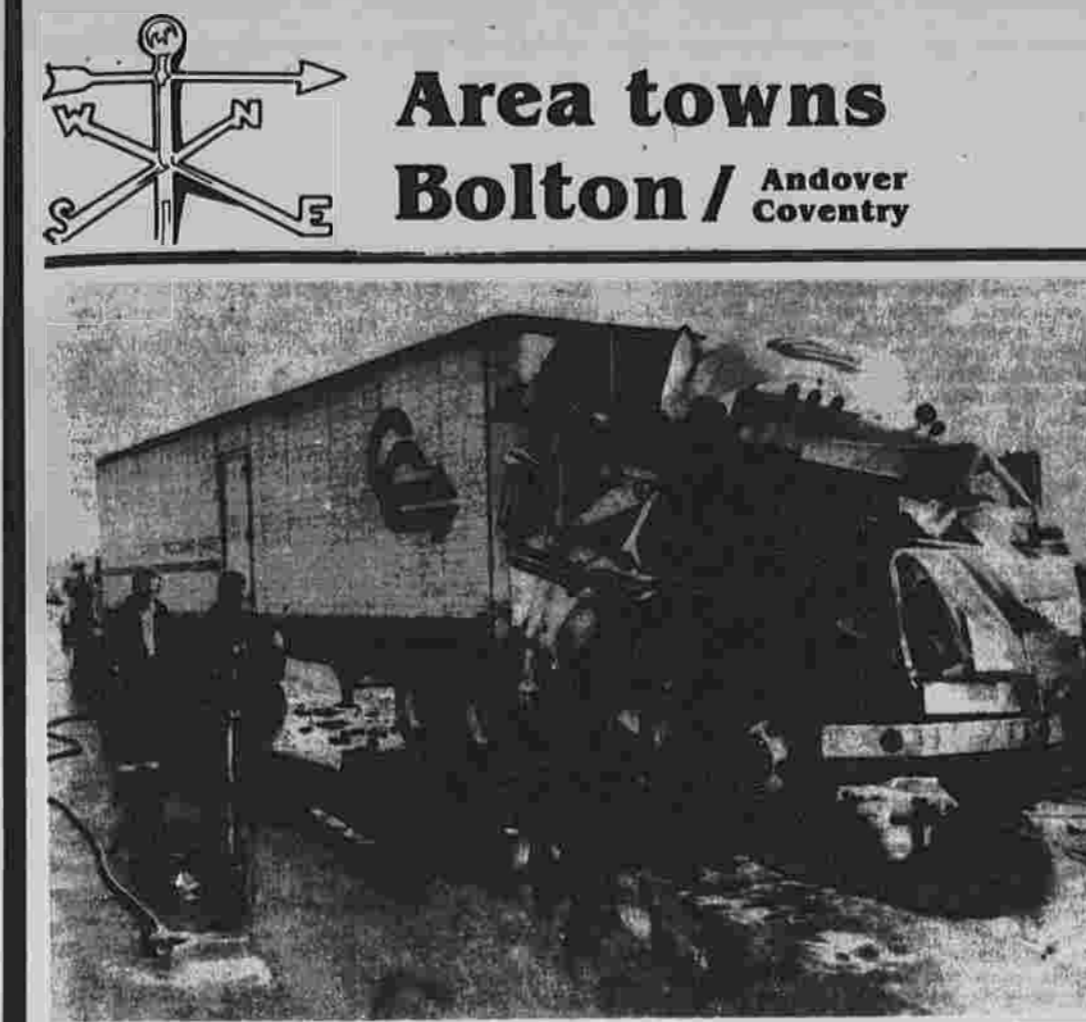
- 6:00 P.M. (1) (2) (3) (4) (5) (6) (7) (8) (9) (10) (11) (12) (13) (14) (15) (16) (17) (18) (19) (20) (21) (22) (23) (24) (25) (26) (27) (28) (29) (30) (31) (32) (33) (34) (35) (36) (37) (38) (39) (40) (41) (42) (43) (44) (45) (46) (47) (48) (49) (50) (51) (52) (53) (54) (55) (56) (57) (58) (59) (60) (61) (62) (63) (64) (65) (66) (67) (68) (69) (70) (71) (72) (73) (74) (75) (76) (77) (78) (79) (80) (81) (82) (83) (84) (85) (86) (87) (88) (89) (90) (91) (92) (93) (94) (95) (96) (97) (98) (99) (100)



MAGNUM'S MAIN MAN John Hillerman is featured as Higgins on 'Magnum, P.I.' airing THURSDAY, MARCH 15 on CBS.

- 11:00 P.M. (1) (2) (3) (4) (5) (6) (7) (8) (9) (10) (11) (12) (13) (14) (15) (16) (17) (18) (19) (20) (21) (22) (23) (24) (25) (26) (27) (28) (29) (30) (31) (32) (33) (34) (35) (36) (37) (38) (39) (40) (41) (42) (43) (44) (45) (46) (47) (48) (49) (50) (51) (52) (53) (54) (55) (56) (57) (58) (59) (60) (61) (62) (63) (64) (65) (66) (67) (68) (69) (70) (71) (72) (73) (74) (75) (76) (77) (78) (79) (80) (81) (82) (83) (84) (85) (86) (87) (88) (89) (90) (91) (92) (93) (94) (95) (96) (97) (98) (99) (100)

- 11:00 P.M. (1) (2) (3) (4) (5) (6) (7) (8) (9) (10) (11) (12) (13) (14) (15) (16) (17) (18) (19) (20) (21) (22) (23) (24) (25) (26) (27) (28) (29) (30) (31) (32) (33) (34) (35) (36) (37) (38) (39) (40) (41) (42) (43) (44) (45) (46) (47) (48) (49) (50) (51) (52) (53) (54) (55) (56) (57) (58) (59) (60) (61) (62) (63) (64) (65) (66) (67) (68) (69) (70) (71) (72) (73) (74) (75) (76) (77) (78) (79) (80) (81) (82) (83) (84) (85) (86) (87) (88) (89) (90) (91) (92) (93) (94) (95) (96) (97) (98) (99) (100)



Area towns Bolton / Andover Coventry

Historic site is confirmed in Coventry gravel pit area

By Tracy L. Geophegan Herald Reporter COVENTRY — Preliminary work last week by an archaeological survey team has confirmed the existence of a prehistoric site in and around the town-owned gravel pit.

Bolton GOP chief lists priorities

By Sarah Passell Herald Reporter BOLTON — Newly elected Republican Town Chairman Mark Johnson said Wednesday he will focus on three goals during his two-year stint as head of the party.

Storm casualty

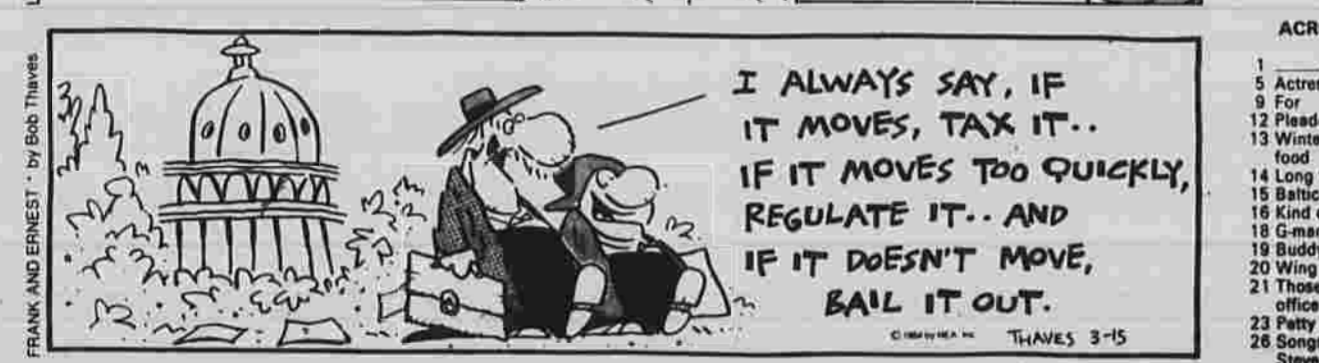
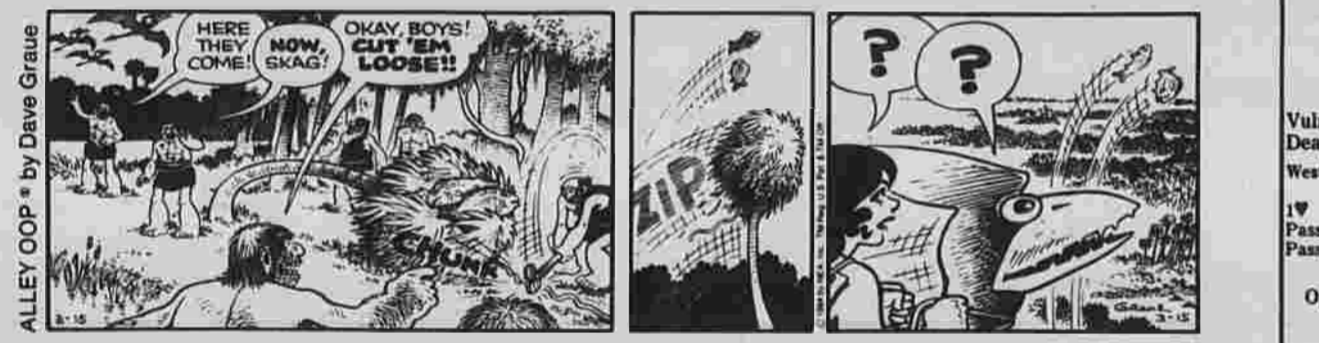
A multiple vehicle accident involving this truck on Interstate 84 in East Hartford during the late morning Wednesday tied up traffic. Accidents were reported throughout the area after the ice storm that left roads dangerous and many consumers without electricity.

Car collides with fire engine

COVENTRY — Ashford resident John Knowles, 30, driving along Route 44 Wednesday morning in his pickup truck, forgot to make way for a North Coventry fire engine and collided with the engine, Coventry police said.

Bolton lists 2nd period honor roll

BOLTON — Bolton High School has announced its honor roll for the second marking period. To qualify for high honors a student must achieve a grade no lower than A-minus.



BRIDGE

North raises to two clubs and East bids two hearts. Mike decides to bid two spades. West passes. East passes. North repeats clubs on the third level. Should Mike bid again? Mike decides not to.

North raises to two clubs and East bids two hearts. Mike decides to bid two spades. West passes. East passes. North repeats clubs on the third level. Should Mike bid again? Mike decides not to.

CROSSWORD

Crossword puzzle grid with clues for Across and Down. Includes a 'Down' section at the bottom.

ASTRO GRAPH

Two persons of whom you were very fond, but drifted away from due to circumstances, are about to reappear in your life this coming year. The reunion will be a happy one.

Advertisement for MCC (Manchester Community College) featuring various products like Nivea Oil, Mink Difference Hair Spray, Vanquish Tablets, and others with prices.

Advertisement for Wines of Italy, featuring MCC and a list of wine selections.

Advertisement for Devillbiss Humidifiers and other products, featuring prices and store information.

Advice

Weekend romance in doghouse

DEAR ABBY: I'm a 19-year-old girl and I don't want to brag, but people tell me I've got a great body. I don't care for guys my own age. They are so immature, they seem like babies.



Dear Abby
Abigail Van Buren

DEAR DR. LAMB: I read in one of your columns that too much magnesium can cause problems. When I was in the hospital for a light stroke...

Your Health
Lawrence Lamb, M.D.

Too much magnesium is no good

DEAR DR. LAMB: I read in one of your columns that too much magnesium can cause problems. When I was in the hospital for a light stroke...

The problem with magnesium in any preparation is that people older than 50 have difficulty eliminating the excess through the kidneys.

Ask Dr. Blaker
Karen Blaker, Ph.D.

Woman says she's doing fine without any men in her life

DEAR DR. BLAKER: I never thought I would be writing to ask you if I am OK. But that is what I am now forced to do because of the behavior of my family and friends.



DEAR DR. BLAKER: I'm sure that your family and friends have only your best interests at heart and would be mortified to learn your reaction to what they probably consider "support."

Social Security

Disability benefits may be the answer

Editor's note: This column is prepared by the Social Security Administration in East Hartford. If you have a question, write to Social Security, Box 501, Manchester Herald, Manchester, CT, 06040.

ANSWER: There are several things that may be helpful. You should call or visit any Social Security office and ask for the free pamphlet, "SSI for Aged, Blind, and Disabled."

QUESTION: I am 45 years old, and I have a heart condition. My doctor tells me I shouldn't work any longer, but I'm not old enough to get Social Security retirement benefits. What can I do?

ANSWER: Social Security isn't just a retirement program. It also pays benefits to younger workers who become disabled.

Cinema

Hartford
Alhambra Cinema — Reopens in April
Cinema City — Encore Nougat (PG) 7:15, 9:25

Establish regular buying habits with your advertising — everyday in The Herald.

When illness strikes, Beau learns whose baby he is

Editor's note: Joe Garman, a Manchester resident for many years, is a recognized authority on the subject of bamboo fly rods, and the sport of fly fishing.



Joe's World
Joe Garman

"Bronchitis? Tonsillitis? You've got to be kidding." This was my response about a month or so ago, when the veterinarian diagnosed Beau, my 2 1/2-year-old yellow Labrador.

take care of him." (This from a lady who professes not to like dogs — See your Beau.) "Don't forget to give him his pills." "Are you sure you gave him the right amount?" "You think he's warm enough?"



Heart-stealing pup

By Barbara Richmond Herald Reporter
I almost did it this week. Until I thought of my two spoiled cats, I almost couldn't resist little Bo, this week's featured pet. If anyone is in the market for a puppy, Little Bo with her big sad eyes will steal your heart for sure.



Bo, an 8-week old female Shepherd cross, waits at the dog pound with Dog Warden Richard Rand. She's ready to be adopted.

Keeping IRS at bay

SAN FRANCISCO (UPI) — The Internal Revenue Service has announced a plan to take some of its customers for a boat ride on San Francisco Bay.

Powers play

HOLLYWOOD (UPI) — Stephanie Powers, co-star with Robert Wagner in the weekly "Hart to Hart" TV series, will make her debut as producer-writer-star in NBC-TV's "Family Secrets," a Mother's Day special.

Home is in pieces

Continued from page 11

The Sauers declined to name the price of their house. But Sauer says the cost is close to the price of custom construction of a comparable structure.

"It's just something I always wanted," says Sauer. "I always wanted an old house." Neither he nor his wife admit to much trepidation, now that the house is beginning to look like a house.

Mrs. Sauer, warehouse manager and buyer for Arthur Drug, says her concerns have been mainly financial. "It's not like buying a house you know will cost a certain amount of money," she says. "There's always the unforeseen."

Barring the unforeseen, however, the Sauers will move in late this spring. Though they are collectors of Victorian furniture, they will start replacing some of the Victorian for 18th century pieces, in keeping with the style of the home.



OUR TIME OF YOUR LIFE Hartford Splash Weekend Works Like Magic.

You'll both love it. Forget the mortgage. Forget the kids. Just the two of you and a glorious, romantic night at the Sheraton-Hartford. We're part of the Civic Center and its 55 shops and restaurants. We have a swimming pool, health club, great dining, nightly entertainment and dancing.

Only \$27.50 per person. Suites are only \$25 additional. What a perfect anniversary or second honeymoon gift! See your travel agent or call toll-free 800-325-3535 or the hotel direct at 203-728-5151.

Advertisement for Northeastern International Airways featuring the slogan 'TO FLORIDA \$109' and 'THE ONLY RESTRICTIONS YOU'LL EVER FIND ON NORTHEASTERN ARE THE SEAT BELTS.'

Table with flight routes and prices: FROM HARTFORD'S BRADLEY AIRPORT TO FT. LAUDERDALE (NON-STOP) \$109, WEST PALM BEACH (NON-STOP) \$109, ORLANDO \$109, ST. PETERSBURG/TAMPA \$109, NEW ORLEANS \$129, BOSTON (NON-STOP) \$39.

Advertisement for Connecticut Travel Services, providing contact information and services for Northeastern International Airways.

Advertisement for The Salvation Army Irish Tea, featuring a cartoon character and details for the event on Saturday, March 17th.

Advertisement for Redema Mill, offering lunch for \$1.25 with a beer and wine, and details for the event on Monday-Friday.

Advertisement for The Main Pub & Restaurant, featuring a 'Week End Bash' with St. Patrick's Day Bash on Friday and Saturday, including corned beef and cabbage.

Cajuns get win in NIT opener

By Fred Lief
UPI Sports Writer

Some Louisiana lightning struck in the Rockies Wednesday night. With George Almones following up a shot with two seconds left, Southern Louisiana defeated Utah State 94-92 in the opening round of the National Invitational Tournament.

After forcing a turnover, the Ragin' Cajuns worked for a final shot in the game in Logan, Utah. Graylin Warner, who finished with 31 points on 14-of-19 shooting, raised but Almones was in good position for the winner.

"We'd designed the play to go to Graylin at the end," said Almones, who had 21 points and 8 assists. "I shifted everybody in his direction. I moved for the basket and the ball just came my way."

"I almost passed it to George because he was open," Warner said. "But I decided to take a chance on the pass. He did the job on the boards."

The Cajuns were down 92-84 but applied a zone press to blank Utah State for the final 4:30, tying it on consecutive baskets by Warner in the final two minutes.

Drexel Allen added 13 points and Dion Brown 13 rebounds for Southern Louisiana. Tom Slaby, 8, Greg Grant had 20 points and Ron Egan 18 for Utah State, 19-11.

"We really made some serious mistakes the last three or four minutes, most of them unforgotten," Utah State coach Rod Tueler said.

Utah State coach Rod Tueler said, "We really made some serious mistakes the last three or four minutes, most of them unforgotten."

Utah State coach Rod Tueler said, "We really made some serious mistakes the last three or four minutes, most of them unforgotten."

Utah State coach Rod Tueler said, "We really made some serious mistakes the last three or four minutes, most of them unforgotten."

Utah State coach Rod Tueler said, "We really made some serious mistakes the last three or four minutes, most of them unforgotten."

Utah State coach Rod Tueler said, "We really made some serious mistakes the last three or four minutes, most of them unforgotten."

Utah State coach Rod Tueler said, "We really made some serious mistakes the last three or four minutes, most of them unforgotten."

Mavs brawl way to win over SD

By Fred Lief
UPI Sports Writer

Pat Cummings had more of a workout Wednesday night than some heavyweights do in a year. The Dallas center was involved in two fights as the Mavericks hit 105-101 at home over the San Diego Clippers. Rolando Blackman hit seven jumpers in the last 70 seconds to secure the victory.

"That was the most physical game I've ever seen," said Cummings. "Tempers were pretty high."

It was all rather humdrum, however, for the Clippers. "That type of game was not so unusual for us," said James Donaldson, the referee. "It seems like we have a lot of physical games."

Cummings threw the ball at San Diego center Bill Walton early in the third quarter after Walton's elbow bloodied Cummings' nose. Last 20 seconds, Kiki Vandeweghe had 32 points for Denver, winners of five of seven, and Isiah Thomas scored 24 for Detroit.

At Detroit, Mike Krushelnyski scored a pair of goals to lead Boston. North Stars 3, Maple Leafs 2.

At Toronto, Al MacAdam and Brian Bellows scored goals 92 seconds apart in the second period to split Minnesota in the tied Toronto didn't manage a shot in the extra period.

At Winnipeg, Manitoba, Dale Hawerchuk scored two goals and added an assist to ignite a five-goal barrage in the first period to pace the Jets.

At Inglewood, Calif., Bernie Nicholls scored his 40th goal of the season and added two assists to lift Los Angeles, Mike Ballard scored two goals, including his 50th of the year, in the final period for Pittsburgh.

At Inglewood, Calif., Bernie Nicholls scored his 40th goal of the season and added two assists to lift Los Angeles, Mike Ballard scored two goals, including his 50th of the year, in the final period for Pittsburgh.

At Inglewood, Calif., Bernie Nicholls scored his 40th goal of the season and added two assists to lift Los Angeles, Mike Ballard scored two goals, including his 50th of the year, in the final period for Pittsburgh.

At Inglewood, Calif., Bernie Nicholls scored his 40th goal of the season and added two assists to lift Los Angeles, Mike Ballard scored two goals, including his 50th of the year, in the final period for Pittsburgh.

At Inglewood, Calif., Bernie Nicholls scored his 40th goal of the season and added two assists to lift Los Angeles, Mike Ballard scored two goals, including his 50th of the year, in the final period for Pittsburgh.

At Inglewood, Calif., Bernie Nicholls scored his 40th goal of the season and added two assists to lift Los Angeles, Mike Ballard scored two goals, including his 50th of the year, in the final period for Pittsburgh.

NBA roundup

Mavs brawl way to win over SD

By Fred Lief
UPI Sports Writer

Pat Cummings had more of a workout Wednesday night than some heavyweights do in a year. The Dallas center was involved in two fights as the Mavericks hit 105-101 at home over the San Diego Clippers. Rolando Blackman hit seven jumpers in the last 70 seconds to secure the victory.

"That was the most physical game I've ever seen," said Cummings. "Tempers were pretty high."

It was all rather humdrum, however, for the Clippers. "That type of game was not so unusual for us," said James Donaldson, the referee. "It seems like we have a lot of physical games."

Cummings threw the ball at San Diego center Bill Walton early in the third quarter after Walton's elbow bloodied Cummings' nose. Last 20 seconds, Kiki Vandeweghe had 32 points for Denver, winners of five of seven, and Isiah Thomas scored 24 for Detroit.

At Detroit, Mike Krushelnyski scored a pair of goals to lead Boston. North Stars 3, Maple Leafs 2.

At Toronto, Al MacAdam and Brian Bellows scored goals 92 seconds apart in the second period to split Minnesota in the tied Toronto didn't manage a shot in the extra period.

At Winnipeg, Manitoba, Dale Hawerchuk scored two goals and added an assist to ignite a five-goal barrage in the first period to pace the Jets.

At Inglewood, Calif., Bernie Nicholls scored his 40th goal of the season and added two assists to lift Los Angeles, Mike Ballard scored two goals, including his 50th of the year, in the final period for Pittsburgh.

At Inglewood, Calif., Bernie Nicholls scored his 40th goal of the season and added two assists to lift Los Angeles, Mike Ballard scored two goals, including his 50th of the year, in the final period for Pittsburgh.

At Inglewood, Calif., Bernie Nicholls scored his 40th goal of the season and added two assists to lift Los Angeles, Mike Ballard scored two goals, including his 50th of the year, in the final period for Pittsburgh.

At Inglewood, Calif., Bernie Nicholls scored his 40th goal of the season and added two assists to lift Los Angeles, Mike Ballard scored two goals, including his 50th of the year, in the final period for Pittsburgh.

At Inglewood, Calif., Bernie Nicholls scored his 40th goal of the season and added two assists to lift Los Angeles, Mike Ballard scored two goals, including his 50th of the year, in the final period for Pittsburgh.

At Inglewood, Calif., Bernie Nicholls scored his 40th goal of the season and added two assists to lift Los Angeles, Mike Ballard scored two goals, including his 50th of the year, in the final period for Pittsburgh.

At Inglewood, Calif., Bernie Nicholls scored his 40th goal of the season and added two assists to lift Los Angeles, Mike Ballard scored two goals, including his 50th of the year, in the final period for Pittsburgh.

Williams trying to help young Bosox

By Fred Waterman
UPI Sports Writer

WINTER HAVEN, Fla. — The last man to hit .400 took the minor leaguer off to a part of the ballpark where no one could overhear them, but voices drift.

"How long have you been in the minors?" Ted Williams asked casually, each man leaning on a bat.

"You're not improving very fast, are you? You hit .261 last year."

"See, my hips are in front of my hands, and I'd like to see you get that. (Lee) Graham is starting to get frustrated. If you keep catching never could. Gee, boy, if you can ever get it, you'd be all set."

Then, as the minor leaguer began swinging the bat again and again, the greatest hitter alive started a non-stop commentary.

"You've got to get your hands lower, feel your right hand pulling the bat through. Good, good. Now do it real slow. Okay, but you're breaking your wrist right here. The longer you keep the bat on an even plane, the better off you'll be. Now swing easy... just look at that. You don't know it but you're looking better already," he said, while the student tried to repeat the swing.

"Good, now the reason you're extending is that your hips are moving," said Ted Williams.

"Okay," he said, moving a step closer. "That's it." He touched the minor leaguer on the shoulder, a gentle tap. "Now practice it. You need it."

And the greatest hitter alive moved away, his bat in his hand, to try to pass along to someone else the perfection of his swing.

And the greatest hitter alive moved away, his bat in his hand, to try to pass along to someone else the perfection of his swing.

And the greatest hitter alive moved away, his bat in his hand, to try to pass along to someone else the perfection of his swing.

And the greatest hitter alive moved away, his bat in his hand, to try to pass along to someone else the perfection of his swing.

And the greatest hitter alive moved away, his bat in his hand, to try to pass along to someone else the perfection of his swing.

And the greatest hitter alive moved away, his bat in his hand, to try to pass along to someone else the perfection of his swing.

And the greatest hitter alive moved away, his bat in his hand, to try to pass along to someone else the perfection of his swing.

Scoreboard

Baseball, Basketball, Hockey, NHL standings, Football, Soccer, etc.

Baseball: Philadelphia 129-3, Boston 111-4, etc.

Basketball: Philadelphia 129-3, Boston 111-4, etc.

Hockey: Philadelphia 129-3, Boston 111-4, etc.

NHL Standings: Philadelphia 129-3, Boston 111-4, etc.

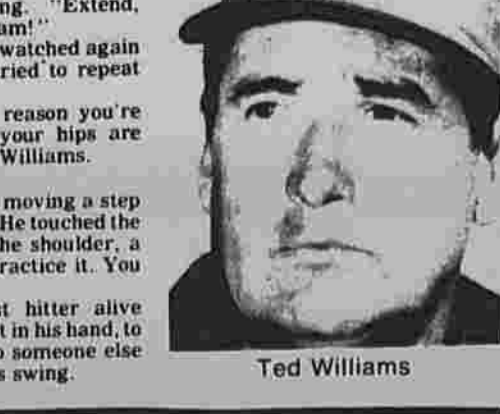
Football: Philadelphia 129-3, Boston 111-4, etc.

Soccer: Philadelphia 129-3, Boston 111-4, etc.

Baseball: Philadelphia 129-3, Boston 111-4, etc.

Baseball: Philadelphia 129-3, Boston 111-4, etc.

Williams trying to help young Bosox



Williams trying to help young Bosox

Williams trying to help young Bosox

Williams trying to help young Bosox

Williams trying to help young Bosox

Williams trying to help young Bosox

Williams trying to help young Bosox

Williams trying to help young Bosox

Williams trying to help young Bosox

Sports in Brief

Blotting 12th in diving, No-hitter pitched, etc.

No-hitter pitched

Even in spring training there is a little bit of magic to a no-hitter...

Unhappy Clark quits Boston College squad

shocked. It happened so suddenly, the coach said...

Radio, TV

TONIGHT: Boston Red Sox vs. New York Yankees...

Transactions

New York (N.Y.) sent to minors for...

USFL standings

Eastern Conference: New York 12, etc.

49ers sign two

REDWOOD CITY, Calif. — Now that the San Francisco 49ers have guaranteed they will...

Red Wing goalie Greg Stefan looks over his shoulder

Red Wing goalie Greg Stefan looks over his shoulder to find his crowd a bit crowded as teammate Greg Smith (5) sandwiches Bruin center Craig MacTavish in a game played in Detroit Wednesday night.

Unhappy Clark quits Boston College squad

shocked. It happened so suddenly, the coach said...

Radio, TV

TONIGHT: Boston Red Sox vs. New York Yankees...

Transactions

New York (N.Y.) sent to minors for...

USFL standings

Eastern Conference: New York 12, etc.

Business In Brief

Discharges bring fines
WALLINGFORD - Nestle Co. Inc. of New Milford has been fined \$30,000 in Litchfield Superior Court after pleading no contest to two counts of illegally discharging waste water into the Housatonic River.

Energy shortage possible?
BOSTON - The threat of a future energy shortage remains despite the current oil surplus, a Shell Oil Co. executive said Wednesday in support of local exploration.

Country magazine is sold
BRATTLEBORO, Vt. - Country Journal magazine - a national monthly publication focusing on rural life - has been sold to a Pennsylvania firm, spokesmen say.

As stock market declines

Here's how to complain about brokers

As the stock market has slid when it was supposed to soar and rippled downward when most Wall Streeters were betting it would ripple up-and-again, complaints against stockbrokers have multiplied. Customers who couldn't care less about commission charges when their portfolios are increasing in value scream when their stocks decline, investors who praise their brokers (and themselves for finding these brokers) when the market is in a major upturn blame these same men/women when the market turns against them (and out others).

Legitimate or not, customer complaints must be heeded. That's the ruling of the securities industry's primary self-regulatory bodies, the New York Stock Exchange, other exchanges and the National Association of Securities Dealers. But how do you file a complaint against your broker? And to whom do you turn first?

At the private luncheon meeting I attended recently with five top marketing executives of five major brokerage firms - all members of the Securities Industry Association - this question nagged the group from the start. The answers they gave, however, can help you:

- 1) Talk to your broker first, all the experts agree. Frequently, complaints involve operational snafus of which the broker is unaware. Many discrepancies, a "sell" order turning up on your statement as a "buy" order, the incorrect price or size of an order, a mistake in your margin account - can be cleared up simply by reviewing the complaint with the broker.
2) If this fails to satisfy you, talk with your branch office manager. The executives who are in charge of the vast branch networks of the brokerage firms have



Your Money's Worth

One marketing executive at the meeting started with all the case of a 46-year-old investor who turned with an \$18,000 account. A little over a year later, his broker had turned the portfolio into \$300,000 - a 200-fold increase. When the account slipped in value to \$42,000, the customer complained to the firm that the broker had misadvised his account!

This is where the importance of having clearly defined investment goals shines through. Think through your goals: income, capital appreciation, tax deferral, the degree of risk you're assuming and the way you can make a real case of broker mismanagement should a dispute arise.

Arbitration hearings do not require you to retain an attorney. Once your request for arbitration has been filed, the entire process usually takes less than a year. Whichever alternative you choose, you cannot appeal an adverse decision through the process.

Hiring a lawyer and taking your claim through the courts is a lengthy, expensive and frustrating experience. A faster, cheaper and equally unbiased method of settling disputed claims involving filing an arbitration claim with either the Arbitration Department of the NYSE (11 Wall St., New York, N.Y. 10038) or the NASD (2 World Trade Center, New York, N.Y. 10048).

Arbitration hearings do not require you to retain an attorney. Once your request for arbitration has been filed, the entire process usually takes less than a year. Whichever alternative you choose, you cannot appeal an adverse decision through the process.

Arbitration hearings do not require you to retain an attorney. Once your request for arbitration has been filed, the entire process usually takes less than a year. Whichever alternative you choose, you cannot appeal an adverse decision through the process.

State sales tax revenue increases again

By Mark A. Dupuis
United Press International
HARTFORD - A consumer buying spree brought the state another windfall in sales tax revenue in January, but budget officials warned the spending was financed with savings and credit and may not continue.

State sales tax revenues came in 24 percent higher during January than the same month a year ago, officials said Wednesday. The jump continued a series of recent monthly surges in demand from leaser economic times.

When you have a growth supported by that consumer confidence it can quickly turn on you because it is not supported by basic economic growth," Balda explained.

Classified.....643-2711

Table with 2 columns: Category and Page/Details. Includes Notices, Financial, Employment & Education.

Table with 2 columns: Category and Page/Details. Includes Real Estate, Services, Automotive, For Sale.

Table with 2 columns: Category and Page/Details. Includes Rates, Read Your Ad, Needle Primer, Casual Half-Size.

Table with 2 columns: Category and Page/Details. Includes Wanted, Help Wanted, & Education.

WANTED INDEPENDENT HOME DELIVERY AGENTS
Need extra cash? Part time delivery and collection agent, greater Manchester area, for USA TODAY, the nation's newspaper. For details call: 659-3535

WANTED INDEPENDENT HOME DELIVERY AGENTS
Need extra cash? Part time delivery and collection agent, greater Manchester area, for USA TODAY, the nation's newspaper. For details call: 659-3535

WANTED INDEPENDENT HOME DELIVERY AGENTS
Need extra cash? Part time delivery and collection agent, greater Manchester area, for USA TODAY, the nation's newspaper. For details call: 659-3535

WANTED INDEPENDENT HOME DELIVERY AGENTS
Need extra cash? Part time delivery and collection agent, greater Manchester area, for USA TODAY, the nation's newspaper. For details call: 659-3535

Help Wanted 21
Babysitter needed for church nursery Sunday mornings and evenings and Wednesday evenings. For an interview and information please call 647-0564.

Help Wanted 21
Mature Stock Clerk - Driver's license required. Apply in immediate office openings for permanent part time cashier. Day shifts till 6pm. Evening shifts from 3pm on available. (Must be over 21 years of age.)

Help Wanted 21
Part Time Cashiers - Mott's Shop Rite of Spencer Street in immediate office openings for permanent part time cashier. Day shifts till 6pm. Evening shifts from 3pm on available. (Must be over 21 years of age.)

Help Wanted 21
Bookkeeper - Full charge for busy medical office. Must have experience and preference preferred. Salary commensurate with experience. Send resume to: P.O. Box 56, Manchester, CT 06040.

LOOK FOR THE STARS...
Look for the CLASSIFIED ADS with STARS; stars help you get better results. Put a star on your ad and see what a difference it makes. Telephone 643-2711, Monday-Friday, 8:30 a.m. to 5:00 p.m.

Various classified ads including: Vernon, Light Trucking, Fogarty Brothers, Floor Sanding, Income Tax Service, Painting/Papering, etc.

Needle Primer
Casual Half-Size
A needlework primer will be a good reference book for your home library. It has How-To directions for popular stitches in both Crochet and Knit, as well as full instructions for 30 items for the wardrobe and home.

Services
REWEAVING BURN HOLES - Zipper, buttons, braids repaired. Window shades, venetian blinds. Keys, TV FOR. Marlow's, 867 Main Street, 649-5221.

Services
REWEAVING BURN HOLES - Zipper, buttons, braids repaired. Window shades, venetian blinds. Keys, TV FOR. Marlow's, 867 Main Street, 649-5221.

Services
REWEAVING BURN HOLES - Zipper, buttons, braids repaired. Window shades, venetian blinds. Keys, TV FOR. Marlow's, 867 Main Street, 649-5221.

CELEBRITY CIPHER
Celebrity Cipher organizes the most popular, most and present. Each letter in the cipher stands for another. Today's star P. WENNER by CONNE WHELAN

CELEBRITY CIPHER
Celebrity Cipher organizes the most popular, most and present. Each letter in the cipher stands for another. Today's star P. WENNER by CONNE WHELAN

CELEBRITY CIPHER
Celebrity Cipher organizes the most popular, most and present. Each letter in the cipher stands for another. Today's star P. WENNER by CONNE WHELAN

CELEBRITY CIPHER
Celebrity Cipher organizes the most popular, most and present. Each letter in the cipher stands for another. Today's star P. WENNER by CONNE WHELAN

Call 643-2711
HERALD WANT ADS
PINE CABINETS AND COUNTERS - Free estimate. Renovating kitchen. Asking \$600. Call after 6pm, 643-9810.

Call 643-2711
HERALD WANT ADS
PINE CABINETS AND COUNTERS - Free estimate. Renovating kitchen. Asking \$600. Call after 6pm, 643-9810.

Call 643-2711
HERALD WANT ADS
PINE CABINETS AND COUNTERS - Free estimate. Renovating kitchen. Asking \$600. Call after 6pm, 643-9810.

Call 643-2711
HERALD WANT ADS
PINE CABINETS AND COUNTERS - Free estimate. Renovating kitchen. Asking \$600. Call after 6pm, 643-9810.

New drug may combat both flu and herpes

BOSTON (UPI) — A drug that doctors hope will be the first to successfully combat a broad range of virus infections from influenza to genital herpes will soon be tested at Beth Israel Hospital.

Doctors say studies of the synthetic chemical ribavirin will focus on the drug's potential in treating recurrent genital herpes, which now afflicts some 20 million Americans and causes 500,000 new

cases each year.

"This drug is highly interesting because of the range of its laboratory action against a number of viruses," said Dr. Clyde Crumpacker of Beth Israel's infectious disease division. Crumpacker is directing the trials with patients and laboratory studies run at several medical centers including the University of California at San Diego.

Under a \$1.1 million grant from Viratek, the California company that developed and produces ribavirin, the studies will concentrate on three herpes viruses: herpes simplex viruses I and II, which cause cold sores on the mouth and genitals as well as eye infections, and herpes zoster virus, which causes chicken pox and shingles. Small exploratory trials of the drug in Los Angeles and Geneva

have shown it is an effective treatment for recurrent genital herpes, according to Viratek President Dr. Robert Smith. Smith said the drug, which is already licensed in Mexico, Brazil, Portugal, the Philippines and South Korea, has been used primarily against respiratory syncytial virus, known as RSV, which inflicts infants with a severe form of pneumonia.

Several hospitals in this country and abroad, including Children's Hospital Medical Center in Boston, have tested an aerosol inhalant form of the drug on babies with RSV infections, a treatment Smith expects to be approved by the federal Food and Drug Administration later this year. Doctors have said the drug may have the capacity to prevent certain viruses from reproducing.

"It may attack a universal process in virus replication," said Crumpacker. Smith said laboratory studies show the drug has also inhibited influenza A and B viruses and two other herpes viruses: Epstein-Barr virus, which causes the highly contagious blood cell disease mononucleosis and cytomegalovirus which causes infections that can damage fetuses.

Study finds tonsil removal helps fight throat problems

By Gino Del Guercio
United Press International

BOSTON — Whether U.S. doctors perform many unnecessary tonsillectomies each year is still in question, but doctors said today that in severe cases, removing a child's tonsils is very effective

against frequent sore throats. "The almost uniformly favorable outcome in subjects who underwent surgery, combined with the variable outcome in those who did not, appears to justify, but by no means to mandate, the performance of tonsillectomy in children with comparable throat-

infection experiences," they said a report in the New England Journal of Medicine. But the doctors at the University of Pittsburgh School of Medicine cautioned that severe cases are rare. In addition, they said, even children with severe cases often outgrow the problem without

surgery. Therefore, they said, doctors and parents should weigh all factors before performing the operation. Many doctors have argued in recent years that too many tonsillectomies are performed with little need. The number of tonsillectom-

ies in the United States each year has declined in the last 15 years. Current medical practice suggests that tonsils be removed if a child is having four or more throat infections with swollen lymph glands each year. "The question is whether this is strict enough," said Dr. Jack L.

Paradise, director of the Pittsburgh study. "My fear is that people will take these results and run with them and liberalize the use of the operation and I don't want that to happen," Paradise said in a telephone interview.

AIDS deaths said to be linked to kidney failure

BOSTON (UPI) — Many AIDS victims die from severe and rapid kidney failure, a fact that had been overlooked until it was discovered recently by a team at Kings County Hospital in Brooklyn, N.Y., doctors reported today.

"At first we wondered if the kidney disease was caused by drug addiction," said Dr. T.K. Sreepada Rao, director of dialysis at Kings County Hospital. "But then we started to see patients with AIDS who never had a drug addiction and had this kidney disease."

The disease — glomerulosclerosis — is similar to a kidney disease that afflicts heroin addicts, but tends to kill AIDS victims faster, usually within months, according to a study published in the New England Journal of Medicine.

"In our experience all the patients died much faster than the heroin addicts and none have survived so far," said Rao.

Kidney dialysis had little beneficial effect, he said.

AIDS — Acquired Immuno Defi-

ciency Syndrome — is a condition that severely hampers the victim's ability to fight infection. Its cause is still unknown.

The study reported 11 people with AIDS who had kidney disease, six of whom were never addicted to heroin. Since the study was concluded, three more AIDS victims with kidney disease have been found at Kings County Hospital, Rao said.

No direct link between AIDS and the kidney disease has yet been found, but Rao believes the kidney disease is probably caused by infections due to the AIDS.

About 12 percent of all AIDS patients reported at Kings County Hospital also had the kidney disease, said Rao.

"After developing kidney failure we put them on dialysis, but they seemed to do very poorly," he said.

The report also found that heroin addiction and AIDS, which both cause kidney disease, may make people more prone to kidney disease than the combined risk of the two separate problems.

Group warns children at risk due to junk food cholesterol

NEW YORK (UPI) — The American Health Foundation has launched a campaign to wean children with high cholesterol levels away from junk food and other high-fat sources.

A continuing study project started by the foundation in 1979 previously found that 4,000 American children between 8 and 18 years old had excessive amounts of blood cholesterol.

Wednesday's announcement of a campaign against high cholesterol in kids was based on a consensus reached by 37 scientists some months ago during a two-day meeting sponsored by the foundation, a non-profit organization of the National Institutes of Health in Bethesda, Md.

High cholesterol levels place children at risk for atherosclerosis and heart attacks when they reach adulthood, said Dr. Ernst L. Wynder, foundation president.

Blood cholesterol levels are considered elevated or excessive when they are higher than 180 mg. per 100 cc of blood, foundation officials said.

"A major effort should be made to educate children in following a low-fat diet and exercising regularly, if the current dangerously high levels of cholesterol in the blood of many young people are to be lowered and if coronary heart disease is to be avoided later in life," a foundation statement said.

New Blue Cross plan tested

MONTPELIER, Vt. (UPI) — Blue Cross-Blue Shield of Vermont is seeking state approval of a new insurance program linking 30 Bennington County doctors in a network emphasizing preventative health care and medical cost containment, it says.

Blues spokesman Charles Butler Jr. said Wednesday the "Primary Care Network," the first of its kind ever offered by the company, was modeled after health maintenance organizations — and is a partial response to an HMO that opened in the Bennington area last year.

He said it was designed by the

company and more than two dozen southern Vermont doctors. Under the plan, Butler said, the doctors will be paid fixed rates, in advance, for medical services provided to each patient enrolled in the program.

"It's an attempt to offer an alternative to traditional programs and a competition to the HMO," he said.

He said the insurance premiums would be "favorable" to those of other medical plans, beginning at \$166 monthly for families and \$55 per month for individuals.



For All Your Projects





89¢

Top Quality
2x3x8 STUD
Partially air dried.
• 2x4x8 KD 1.69



5.99

4'x8'x1/2" Agency Cert.
WAFERS
Exterior grade. Solid core.
• 4'x8'x1/2" Agency 4.59



24¢

6 1/2" R-19 Unfaced
ATTIC INSULATION
• 15', 49 SF Roll 11.76
• 23', 75.1 SF Roll 18.02



32.99

24" Interior Luan
DOOR UNIT
Casing, passage set extra.
• \$3 Off Reg. Price Other Stock Sizes

Let Grossman's Help You Select the Best Values

 <p style="font-size: 1.2em; font-weight: bold;">9.99</p> <p>Reg. 16.99 Gallon SUPER KEM-TONE Flat latex wall paint. Choice of colors. Soap and water clean-up.</p>	 <p style="font-size: 1.2em; font-weight: bold;">5.49</p> <p>4'x8'x3/8" Gypsum WALLBOARD Ideal base for paint or wallpaper. Just cut and nail in place.</p>	 <p style="font-size: 1.2em; font-weight: bold;">29.99</p> <p>24"x80" Reg. 34.99 FLUSH INSET Casing and jamb extra. • \$4 Off Other Stock Sizes</p>	 <p style="font-size: 1.2em; font-weight: bold;">49.99</p> <p>Water-Saver WHITE TOILET White vitreous china. 12" rough opening. "Acacia". Seat extra.</p>
 <p style="font-size: 1.2em; font-weight: bold;">24.99</p> <p>Reg. 32.99 Sgl. Bowl 22"x22" SINK Stainless steel. 8" depth. No. 47004.</p>	 <p style="font-size: 1.2em; font-weight: bold;">1.99</p> <p>1"x10"x3" PINE SHELVING • 4' - 2.49 • 6' - 3.69</p>	 <p style="font-size: 1.2em; font-weight: bold;">10.99</p> <p>Reg. 13.99 Gal. POLYURETHANE Protect wood. Choice of satin or gloss.</p>	 <p style="font-size: 1.2em; font-weight: bold;">9.99</p> <p>Reg. 12.49 W/Saw WIRE BOX Preset for 45°, 90° angles. 14" back saw.</p>
 <p style="font-size: 1.2em; font-weight: bold;">8.99</p> <p>Reg. 15.59 'Galaxie' PASSAGE SET Push button lock on inside. N428D-3.</p>	 <p style="font-size: 1.2em; font-weight: bold;">7.99</p> <p>5 Gal. Pail JOINT COMPOUND Ready mixed. For installation of gypsum.</p>	 <p style="font-size: 1.2em; font-weight: bold;">99¢</p> <p>Reg. 1.15 SF-Solarian FLOOR TILE 12"x12". Do a 10'x12' room for 118.80</p>	 <p style="font-size: 1.2em; font-weight: bold;">2 for \$1</p> <p>Reg. 79¢ ea. Switches/ RECEPTABLES Brown or Ivory. U.L. listed. Your choice.</p>

Sale Ends Saturday, March 17

MANCHESTER 148 Main Street 643-6176	NEWINGTON 3127 North Turnpike 688-0051	HARTFORD 3000 So. Main Street 825-6263	ENFIELD 78 Main & Putnam Sts. 741-2108
--	---	---	---

OPEN Mon thru Fri 8 am-8:30 pm Sat 8 am-6:30 pm Sun 9 am-3 pm

Anniversary SALE

SAVE \$150.00 on the

Swintec Electronic Typewriter



- Self-correcting
- 3 pitches
- Automatic centering
- Automatic underlining
- Automatic return
- Decimal tabulation
- Memory retention

Was \$749.00 NOW \$599.00

offer expires March 31st

ALLSTATE BUSINESS MACHINES

41 Purnell Place Manchester

643-6156

Also Sales and Service on Calculators and Cash Registers

the Pitts
le will take
with them
use of the
want that to
said in a

Spring Home Improvement



Advertising Supplement To The

Manchester Herald

Thursday, March 15th, 1984

Shingles

Care for the 'shakes' and other tricky shingling problems

Wood shingles are called shakes. Most often made of cedar, these come in individual shingle sheets, as asphalt shingles do. The shingle is thicker at the front edge and tapers to a thin edge at the back.

You will need replacement wood shingle, hammer, pry bar with nail claw, galvanized 5d nails, hatchet and small wood blocks.

It will take about 30 minutes.

1. You can remove the broken or decayed shingle without disturbing the shingle above it by placing a sharp hatchet against the edge of the damaged shingle and tapping with a hammer until the shingle splits. Then pull the broken parts from the roof.

2. Be very careful as you work not to damage the underlayment material used under the shingles. Use a roof ladder to provide footing on the slope of the roof.

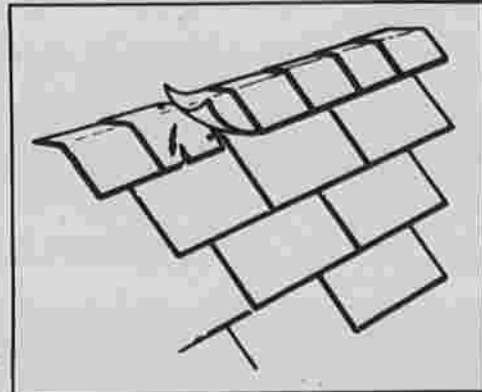
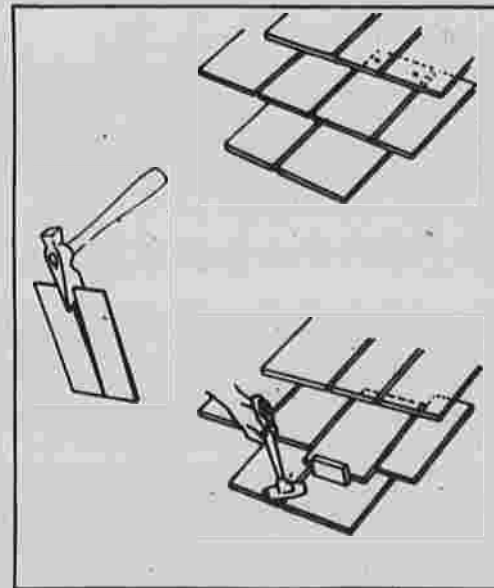
3. The nails which held the old shingle remain in the roof. You can cut them off flush with the roof using a hacksaw blade.

4. Trim the new shingle to fit into the slot left by the old shingle. New shingle should be 1/4-inch narrower than the slot, to allow 1/4-inch gap between it and shingle on each side of it. Easy way to trim shingle to size is to place hatchet blade against the shingle at the point where you want to cut it, then tap with a hammer.

5. Insert the new shingle into the slot. Hold a small block of wood against the outer edge of shingle and tap it with a hammer to drive the shingle up into position.

6. Drive two nails through shingles above the new shingle, through the new shingle, and into the roof. Place nails approximately 1 1/2 inches above shingle edges and 3/4-inch from shingle sides.

The shingles at the ridge of the roof or at the hip (the valley where two roofs join) usually are 9x12-inch rectangles of the same material as the regular shingles. The procedure for replacing one of these is similar to that for replacing an asphalt shingle.



Wood shingles, called 'shakes' can be replaced according to diagram at left. Above: It will take about 30 minutes to replace shingles at the ridge of the roof.

You will need a hammer, putty knife or trowel, prybar with nail-lifting claws on one end, asphalt roofing cement, galvanized roofing nails.

1. Use a roofing ladder to reach the ridge of the roof or the damaged part of the hip safely.

2. Work on a warm day, when the shingles are pliable.

3. Lift the shingle which overlaps the damaged shingle to have access to the nails holding the damaged shingle.

4. Use the prybar to remove the nails holding the damaged shingle in place.

5. Pull the damaged shingle out and discard it.

6. Insert the new shingle in its place and fasten with four galvanized roofing nails.

7. Put a dab of roofing cement on each nail head.

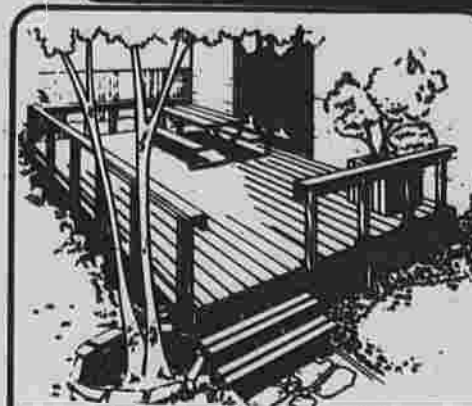
8. Put a dab of roofing cement on the underside of each side of the shingle above the one just replaced. Press this shingle into place.

9. The repair is finished.

MANCHESTER LUMBER

"Early Bird" SPRING SALE

SALE ENDS THIS SAT. MARCH 17th
All Prices Cash & Carry



Pressure Treated Lumber
Treated lumber isn't just dipped or painted. Preservative is forced into cells so top quality lumber. So it resists insects and weather. It's ready to use when you buy it. No more treatments necessary. Ideal for benches, decks, tables - all outdoor projects. Southern yellow pine treated with K-33 Chemical in 48 retention and stamped for ground contact.

	8'	10'	12'	14'	16'	18'	20'
5/4x6	\$4.29	\$5.13	\$6.01	\$6.98			
Deck & Framing							
2x4	\$2.44	\$3.07	\$3.82	\$4.77	\$5.58		
2x6	\$3.95	\$4.90	\$6.24	\$7.79	\$9.67	\$10.13	\$12.13
2x8	\$4.84	\$6.02	\$7.12	\$8.71	\$10.64		
2x10	\$7.29	\$9.25	\$11.02	\$13.41	\$16.43		
2x12		\$13.25		\$20.32			
4x4	\$4.92	\$6.24	\$7.12	\$8.10	\$11.10		
1x6		\$3.99		\$5.03			
1x8		\$4.74		\$6.32			



We have the Andersen® windows you've seen advertised on TV.

Whether you're building a new home, remodeling or replacing windows, we have those high-quality, energy-efficient Andersen® windows and gliding patio doors they're singing about on television. Come on in and see us today!

PUT IN A WOOD FENCE

STOCKADE PRIVACY FENCE
• 2" Cedar lining • sturdy double construction means no bulging • cedar or pressure treated posts • extra wide 3 1/2" extra thick 2" pickets for a longer lasting fence. Price includes cost of 1 post.

6x8 \$34.95 5x8 \$31.00
4x8 \$28.00

ROUND RAIL
• Heavy Duty 3" Cedar rails • Heavy Duty Durable Cedar & Spruce Rails • Price includes 1 post & 2 1/2' rails.

\$11.56 Per Section

SPLIT RAIL
• Rustic hardwood rails and red resistant locust posts. Price includes 1 post & 2 1/2' rails.

\$17.43 Per Section

FIBERGLAS EASY CEILING REBATE DAYS

"They won't believe you did it yourself!"

- Easy to cut
- Easy to handle
- Easy to install

Frost White ONLY \$1.99 per panel
REG. \$2.35

Esprit ONLY \$1.99 per panel
REG. \$2.38

Pebble ONLY \$2.55 per panel
REG. \$3.37

Sculptured ONLY \$2.85 per panel
REG. \$3.75

Get a Beautiful Ceiling at a Bargain Price! Fiberglass 2'x4' panels are:

- Flexible work within 2' of your present ceiling
- Double in your limited warranty against sagging & warping
- Lightweight easy to handle & shape around pipes & corners
- Easy to install requires no special tools
- Washable - can be cleaned with soap & water.

Georgia-Pacific Paneling Sale!

Front Street Birch 5/32 simulated wood reg. 9.49 NOW 8.49

Cider Brown 5/32 simulated wood reg. 10.22 NOW 9.19

Terrace Pecans 5/32 simulated wood reg. 11.55 NOW 10.29

Firelight Oak 5/32 simulated wood reg. 15.05 NOW 13.49

Barnplank 5/16 genuine wood veneer reg. 17.79 NOW 15.99

Bridgeport 1/4" genuine pine veneer reg. 19.55 NOW 17.49

INTERIOR SHUTTERS

ALCOA GUTTER SYSTEM 94¢ per lin. ft.

Unfinished 1/2" shutters stocked in moveable and fixed styles in a wide variety of sizes. Ideal for windows, cabinets, doors, bookcases. Can be trimmed up to 1" in width, 4" in height.

SOLD IN PAIRS ONLY
Moveable as low as \$24.00 ea.
6" wide x 16" high
Stationary as low as \$49.00 ea.
7" wide x 16" high

Manchester Lumber

255 Center St. • 643-5144

OPEN MON.-SAT. 7 a.m.-5 p.m.

Some items & prices limited to quantities on hand & subject to prior sale.

VISIT OUR NEW FULL SERVICE BRANCH at 185 Spencer St. (next to Friendly's)

SPRING INTO SPRING LIMITED TIME ONLY 12.50% For HOME IMPROVEMENT *Annual percentage rate

11.50% * NEW CAR LOANS 25% DOWN PAYMENT 48 MONTHS TO REPAY

12.50% * HOME EQUITY LOANS 10 YEAR REPAY

13% * 1981-1983 APR USED CAR LOANS

14% * 1979-1980 APR USED CAR LOANS

NO POINTS - NO PREPAYMENT PENALTIES - NO GIMMICKS

*The variable rate is fixed for the first year and then is subject to increase or decrease annually during the remaining life of the loan

MANCHESTER STATE BANK Member FDIC
"YOUR LOCAL HOMETOWN BANK"

1041 Main St. Manchester 646-4004
or
185 Spencer St. Manchester 649-7570

Equal Housing Lender
Equal Opportunity Lender

1-MANCHESTER HERALD, Thursday, March 15, 1984

MANCHESTER HERALD, Thursday, March 15, 1984 -3

Mary Ann Westry did it her way

By Susan Plese
Herald Reporter

Mary Ann Westry of 22 Channing Drive didn't have a lot of money to decorate her Squire Village four-room apartment. So she used her imagination — and some unconventional ideas — to express her personality in a traditional townhouse.

Mrs. Westry, a mother of three, always has her eyes open for unusual pieces. Many of her prized possessions have been purchased at tag sales, scavenged from businesses, even picked up off the roadside.

She pays particular attention to the walls and ceiling in her home: the ceiling in the kitchen for instance, is nearly obscured by large tree twigs criss-crossed across the space. Originally, she had wanted to install a beamed ceiling. But management frowns on such projects. "One thing about these apartments, you're not allowed to do a lot," Mrs. Westry says.

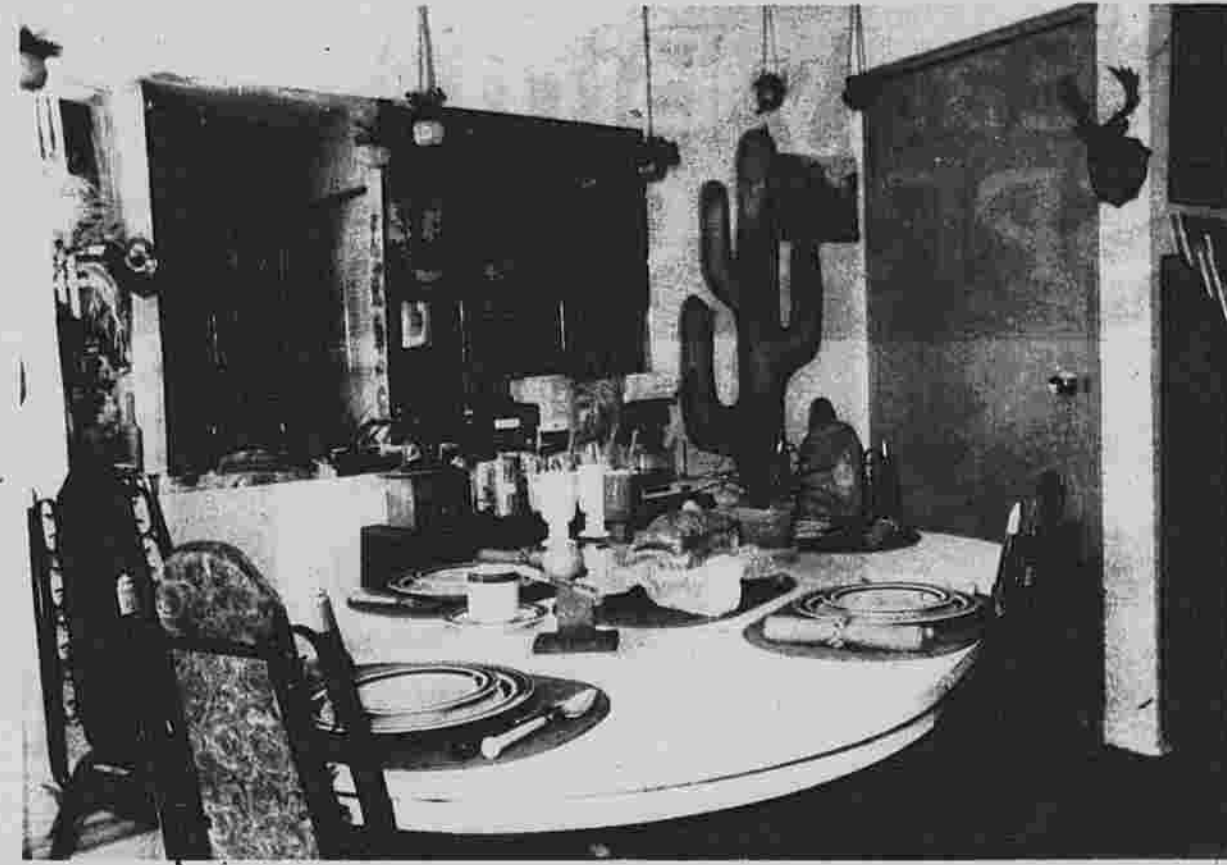
SO SHE SETTLED on the tree branches instead. They are not permanently installed, but are held in place by the cabinet tops. The idea is repeated in the living room, where branches appear to grow out of an old potbellied wood stove.

The tree-branch decor started, she says, when she started collecting interesting-looking limbs, and was searching for a use. "I'd ride down the road and I'd see a tree limb and put it in 'the back of my station wagon,'" she says.

"I was looking most to create a different effect. Most people don't have logs in their kitchen," she says with a laugh.

Atop the kitchen cabinets, where many people store large pots and pans, Mrs. Westry has positioned a half-dozen bushel baskets used for storage of small items. Most of the baskets were free — courtesy of her daughter, who used to work picking green beans for a local farmer.

A large, imitation palm tree stands in a front corner of the kitchen. That used to greet diners at On Luck Chinese Restaurant on Spencer Street. "I liked it, and they had an extra one in their



A corner of the kitchen is used as a dining area. The table is set for guests.

back room and they sold it to me," Mrs. Westry says.

Two large windows, one a sliding door with southern exposure, provide a home for Mrs. Westry's many oversize cacti. The largest cactus, which stands about three feet tall, was picked up at a tag sale. The cactus, which had just one stalk, now has three or four babies at its base. "I've watched them grow," says Mrs. Westry.

An appliqued cactus wallhanging on one kitchen wall echoes the real-life

Please turn to page 5

Declare war on dandelions

MARYSVILLE, Ohio (UPI) — Hand-to-weed conflict is not the way to win the dandelion wars, says a manufacturer of lawn and garden care products.

To get rid of dandelions, you must eliminate the entire plant, including the taproot, say experts at The O. M. Scott & Sons Co.

This means spreading a selective broadleaf control during the first days of spring to destroy dandelions and other common broadleaf weeds, such as clover, plantain, buckhorn and chickweed. The control destroys the weeds without harming desirable turfgrasses.

The best time to start, the experts say, is when dandelions have blossomed but have not reached the puffball stage.

FREE

SWIMMING POOL LAYAWAY
A small deposit will hold & guarantee your 1984 pool at 1983 prices.

Sabrina
POOLS & HOT TUBS

RTE 44-A, COVENTRY
742-7308 — OPEN DAILY 9-5, SUN. 12-5
New Store
317 W. Service Road
Hartford 247-5413
Mon. & Wed. 11-5:30 Th. & Fr. 1-8
Sat. 11-5 Sun. 12-5 Closed Tues.

WE'LL MAKE YOUR LAWN "COME ALIVE" THIS YEAR AT A COST YOU CAN LIVE WITH!

OUR EVERGREEN PROGRAM
WHAT WE DO AND WHEN WE DO IT

<p>EARLY SPRING</p> <ul style="list-style-type: none"> Granular, Hi-Nutrient Fertilization, No Sprays! DANDELION, Broadleaf Weed Control Patch SEEDING Pre-Emergent Crabgrass Control 	<p>MID SUMMER</p> <ul style="list-style-type: none"> Dry, Balanced Controlled Release Fertilization Broadleaf Weed Control Surface Insect Control
<p>LATE SPRING</p> <ul style="list-style-type: none"> Dry, Balanced, Controlled Release Fertilization Broadleaf Weed Control Chinch Bug, Sod Webworm Control Grub Control 	<p>EARLY FALL</p> <ul style="list-style-type: none"> Granular Fertilization, Heavy-Rate Formula Broadleaf Weed Control POWER AERATION
<p>LATE FALL</p> <ul style="list-style-type: none"> Lime — Professional formula for uniform, total lawn coverage, to correct soil acidity imbalance. Fertilization — Special Winterizer Formula for Deep Root Growth and Early Green-Up Next Spring 	

ONLY \$2850

CALL NOW FOR PROMPT FREE ESTIMATE
24 Hours a Day, 7 Days a Week

EVERGREEN LAWSNS 649-8667
53 SLATER ST.

MANCHESTER HERALD, Thursday, March 15, 1984 — 5

The unusual Westry place

Continued from page 4

cactus in the window. A three-dimensional cardboard cactus — picked up for a few dollars after it decorated the stage for a school play — stands in another corner.

Mrs. Westry obviously loves her home. "My heart is in my home," she says. Indeed, her apartment is immaculate.

On the day the Manchester Herald visited, the dining table was set with cloth placemats and napkins, and a fresh muffin in a basket at each place setting.

One could say she approached her apartment — exactly like dozens of others in the complex — like a blank piece of canvas. Her ideas came after sitting for hours and studying the space she had available.

"I had a very, very plain kitchen. I just looked at it and thought, 'what are some of the things I can do with it?'" she says. "I'd sit in that chair and study the kitchen. I know it's something I enjoy doing."

Mary Ann Westry stands in the kitchen of her Squire Village apartment. Many plants line the sunny windows. In photo at far right: dried plumes decorate a corner of the living room. An old typewriter sits on a keg.

Herald photos by Hudson



CLIP THIS COUPON

90 DAYS SAME AS CASH*
ON ALL MAJOR APPLIANCES AND T.V.s

**GE FRIGIDAIRE
RCA
ZENITH
QUASAR
AND MORE!**

* TO QUALIFIED APPLICANTS • COME INTO STORE FOR DETAILS

B.D. PEARL & SON Sales & Service Since 1941

643-2171
649 MAIN ST.
DOWNTOWN
MANCHESTER

Pearls
TV AND APPLIANCES

Free Service
Free Removal
of Old Appliances
Free Local Delivery

For 42 YEARS.

How you can install any shelf anywhere

By UPI-Popular Mechanics

You put up a shelf for decorative glassware or a collection of beer mugs. Later, you load on books and stereo equipment — and your shelves fall off the wall.

Most shelves will have to handle heavy loads either now or later, so it pays to get them up right the first time, especially wall-hung shelves that have no floor support. Commercial shelf hardware comes in types and styles to suit any need.

For wall-hung shelves, you face to basic considerations: proper wall attachment to support total load, and proper bracket spacing to prevent sagging shelves.

In general, the maximum safe span for a heavily loaded 3/4-inch wood shelf, with no support at the back edge, should not exceed 32 inches. Shelves in enclosed bookcases with back support can span up to 48 inches. Glass shelves of 1/2-inch plate, such as typically used in medicine cabinets, should not exceed about 20 inches between supports, though much heavier 3/4-inch plate can safely span up to 40 inches.

Screws turned into thin wood paneling or plasterboard will soon pull loose. Wherever possible, it's best to screw shelf brackets into wall studs. This way, the studs — not the surface wall — support the load and no special anchors are needed. Since studs are generally spaced on 16-inch centers, you can screw into every other one and maintain a sturdy 32-inch spacing.

But studs are often hard to find or may not fall where you want the shelf

bracket. Here you need anchors made specially for hollow walls. Screws turned into plastic sleeves will support hundreds of pounds and stay put indefinitely. Other anchors made of lead or zinc are used in masonry walls.

Metal utility shelving, once relegated to the basement, now comes in attractive decorator colors, making it at home in a family room, den, pantry, home office and children's room.

Consisting of predrilled angle-iron legs and lipped metal shelves, these handy bolt-together units can be assembled in minutes with only a screwdriver. They provide fast, flexible storage wherever substantial shelving is required. The leg angles have rows of closely spaced bolt holes so the height of the shelves can be adjusted easily.

Most metal utility shelving is designed to be free-standing, making it readily movable. Some units, however, can be wall-hung with special clips. Stock sizes range from 47 inches high by 30 inches wide up to 71 inches high by 42 inches wide. Shelves come 9 to 24 inches deep.

Adjustable shelving provides one of the most versatile and attractive systems for wall-hung shelves. It uses slotted metal uprights, called standards, that can be attached to any wall surface. Metal arms, keyed to fit into the slots, lock in at any height to support a series of adjustable shelves wherever they are needed.

The standards come in lengths of 1 to 6 feet and in a variety of finishes, including brass, bronze, aluminum, chrome, black

and white. Matching brackets are available in 6-, 8-, 10- and 12-inch lengths and take either prefinished shelves in stock widths or plain boards you finish yourself.

The great advantage of this type of system is its flexibility. You can add shelves at any time, rearrange them to suit changing needs, and lift them out for easy cleaning.

Perforated hardboard such as Masonite's versatile Peg-Board is widely used for storing tools, sports equipment and other gear. It also can serve as the basis for a flexible shelf system. Metal shelf brackets, made to hook into the pre-punched holes in hardboard, are available in 4- to 8-inch lengths and can take prefinished or home-made shelving boards.

While the brackets are not designed for extremely heavy loads, they'll handle most common household items, are readily adjustable in the 1-inch-spaced holes, and can be combined with the many other Peg-Board fixtures to provide a variety of storage arrangements. While the standard panel size is 48 feet, many hardware stores and home centers sell half and quarter sheets for do-it-yourself convenience.

The panels are easy to put up, but must be spaced at least 1/4-inch away from the wall to provide clearance in back for the fixture hooks. On large sheets this is best done with furring strips around the edges and horizontally at 2-foot intervals in between. Small panels can be mounted with commercially available spacers or with special standoff wall anchors that come with a 3/8-inch collar.

Lock your sliding doors

Sliding glass doors exiting to a patio usually have catch locks of some type on them, but these are not secure.

The best way to lock a sliding door is with a bar lock which is nothing more than a bar which fits between the door frame and the inside section of the pair of sliding doors.

You can purchase a bar lock which is screwed to the door frame and which is hinged so that when you want to open the door, you simply lift the bar.

However, you can make a bar lock which is equally effective by cutting a broom stick or other length of wood to the proper length.

You will need an old, firm broom or

mop handle and a saw. It will take about 10 minutes.

1. Close the sliding doors.
2. Standing on the inside, measure the distance from the inside door to the frame.

3. Cut a length of broom stick or mop handle to this length and drop it in the channel at the bottom of the inside door.

4. This locks the door. To open the door, simply lift the broom stick out of the channel. It isn't necessary to lock the outside door of the pair, since it cannot be opened as long as the inside door is locked.

155 Center St. **TAYLOR RENTAL**
Manchester, Ct. *Center*
Mon.-Sat. 7:30-5:30 643-2496

TAYLOR RENTAL CENTER MANCHESTER
IS YOUR SINGLE SOURCE FOR QUALITY
TOOLS AND EQUIPMENT FOR YOUR
SPRINGTIME PROJECTS.

★ Do You Need — a floor sander?



★ Do You Need — a lawn thatcher?



★ Do You Need — a carpet kicker?



★ Do You Need — a lawn spreader?



★ Do You Need — a floor polisher?



★ Do You Need — a lawn roller?



★ Do You Need — a sod cutter?



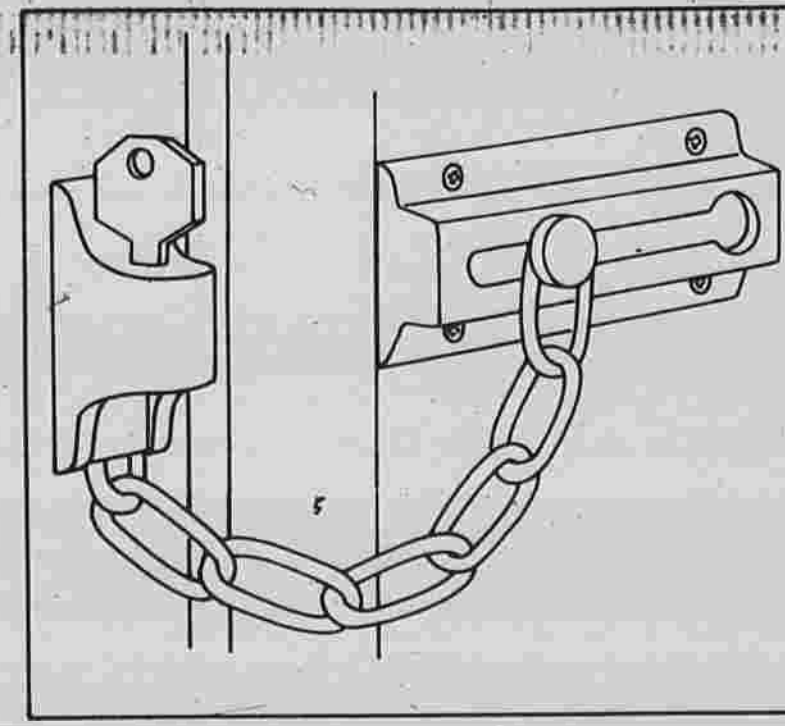
★ Do You Need — a garden tiller



★ Do You Need — help or advice with any of your spring home or yard projects?

COME SEE US AT TAYLOR RENTAL
WE'RE EQUIPPED TO EQUIP YOU!

TAYLOR RENTAL CENTER
155 Center Street
Manchester, Conn. 643-2496



Security experts advise homeowners that it's wise to open doors only with chain locks fastened.

Why a chain lock?

The chain lock on an exterior door serves one major purpose — to allow you to open the door a few inches to talk to or see anyone.

Security experts advise you to open the door only when the chain lock is on and not to remove the chain until you are satisfied as to the identity of the person outside.

A chain lock is also a deterrent to burglars, since it is one more lock they must get through to gain entry. However, a burglar can reach in through the opening, once he has the other locks open, and slide the chain open.

To make things more difficult for him, you can replace your present chain lock with one that has a key. You reach back to lock it as you leave home. A burglar reaching through the door can't slip the chain.

(NOTE: When buying a chain lock, be sure the chain is made of hardened steel. Cheap chains can be snapped through quickly with a small cutter.) You will need a chain lock — with key

and hardened steel chain — and a screwdriver. It will take about 20 minutes.

1. Remove the existing chain lock by removing the screws which fasten it to the door frame.

2. Fasten the new chain lock in place, using the screws supplied with it.

3. The biggest weakness of any chain lock is the fact that it is fastened to the surface of the door and the door frame with screws. Once the door has been opened, an intruder can throw his weight against the door and rip the screws out.

To avoid this possibility, you can replace the screws with long bolts.

On the lock slide, mounted on the door, use smooth-headed bolts. Drill holes through the door and install the bolts with smooth head on the outside of the door. On the chain holder, mounted on the frame, use very long bolts which extend through the door frame. The heads of the bolts can be hidden under the exterior door molding.

Chair springs are fit to be tied

If you have a group of springs sitting straight up on new webbing webbing in a chair, you are ready to start tying. To secure the tops of these springs, you tie them with heavy twine. Since the way the springs are tied determines the shape of the seat, you need to know how to tie for a rounded or square seat. This project covers the tying for a rounded seat.

You will need six-ply hemp twine in a ball. Do not use cotton twine. It will take about 60 minutes.

1. A rounded seat with the springs, for example, is tied making it ready to be covered with burlap. The springs are tied with two lengths of twine and each course is anchored to No. 12 or No. 14 tacks driven into the wood rails.

2. Always tie the front-to-back rows first, then the side-to-side rows. Begin with the center front-to-back row.

3. Measure the distance from the front rail to back rail and cut a length of

twine about one foot longer than double this distance.

4. Drive a tack into the front rail, and another into the back rail.

5. Tie twine to the front rail tack. Then drive the tack into the rail, securing the twine.

6. Connect all springs in the row by looping the twine around the top coils. The twine is looped around both the front and back side of each coil, and the spring is compressed into its final position as the loop is made, so that the twine holds the spring in this position.

7. When you reach the back rail, loop the twine around the tack you drove there.

8. Check the shape of the springs and adjust them if necessary. Then drive the tack in, securing the twine.

9. Complete tying each row of springs from front to back, then tie each row from side to side.

DID YOU KNOW.....

AL SIEFFERT'S offers one of the areas largest selections of Home Improvement appliances at Low discount Prices?.....

...NOW YOU KNOW!
RANGES•WASHERS•DRYERS
DISHWASHERS•MICROWAVES
REFRIGERATORS•FREEZERS
See our expanded Microwave Dept.

Including a large display of built-in appliances

Enjoy outdoor flavor... Indoors.

Jenn-Air Grill-Range
Grilling isn't just for cookouts anymore. The Jenn-Air convertible grill-range lets you grill, griddle, rotisserie, shish kebob, french fry... every day of the year. With delicious results. Its selective Convection Oven works like a regular oven or cooks "convected" so meats cook juicy and golden brown in up to 50% less time. Stop in... let us demonstrate the Jenn-Air Deluxe Grill Range. We'll show you how to make cooking more interesting, and more fun.



ALL MODELS SALE PRICED DURING AL SIEFFERT'S HOME IMPROVEMENT WEEK

\$799
SAVE \$200

See The Exciting Jenn-Air Ranges
Al Sieffert's MANCHESTER
TONIGHT TIL 8
TUES., WED., SAT. TIL 9
647-9997
647-9998

You can count on it

Wood is wont to warp

NEW YORK (UPI) — Over the ages that people have struggled to make something useful and decorative out of wood, the seasonal swelling and shrinking of the material has brought countless projects to grief.

Until the advent of central heating, the problem was not so great: if the piece was made in the same sort of climate in which it was to be used, it probably would survive. This is why a lot of antiques have survived despite construction that ignored wood movement or warping — although some of those pieces are having trouble now.

The modern woodworker must deal carefully with the matter of wood movement or he will surely regret it.

My first projects were jewelry boxes, and I built them the way many books tell you to do it — join the sides, glue on the top and the bottom, and then cut through the box to separate the lid from the case. Simple enough, except that within a month or so the lids arched up like trunk tops. I can't im-

agine why the bottoms haven't cracked. They probably will eventually.

The movement the woodworker has to be concerned with occurs across the grain. Movement in the thickness or the length is minimal enough to be ignored. But if you are working with a piece of much more than 4 inches in width, and if you constrict its natural tendency to move with variations in humidity, then it will almost certainly warp, and if it is secured in a way that prevents warping, it will crack.

Count on it. It was to deal with this phenomenon that frame-and-panel construction was developed. I still make boxes, but the lids are frame-and-panel now, and not one of them has warped.

Don't ever screw a solid table top to the rails. I use pieces of hardware called table top fasteners, which are sort of Z-shaped. These can be had from The Woodworkers Store, 21801 Industrial Blvd., Rogers, Minn. 55374. One end is screwed to the table top and the other end fits

into slots routed in the rails, thus holding the top down tight to counter warping, but allowing it to move laterally. Several books show how to make simple "buttons" of wood to accomplish the same thing.

Breadboard ends are an especially aggravating example of the extremes to which you must go to let wood do its thing. There were periods in the history of furniture when cabinetmakers went to any length to minimize the amount of end grain that showed; if they were using solid wood, rather than veneer, for a table top, then they would add breadboard ends.

I have no personal distaste for end grain at all, but I built a couple of lap desks, and these items are more or less period pieces per se. I have never seen one without breadboard ends, and I was also concerned that such a large lid might warp to some degree despite its freedom. So I used breadboard ends.

The best procedure — which I used — is to secure the breadboard ends to

the lid by means of a sliding dovetail. This is not a comfortable joint to cut; it has a tolerance of about 1/28 of an inch between perfection and uselessness.

The joint cut and the pieces in place — without glue, of course — the ends were pinned in place by a single dowel in the center of each. It is acceptable to pin or screw or otherwise secure a panel in one place — the wood can work out its movement on either side. It's when you pin it down in more than one place that trouble arises.

In the case of the breadboard ends, you've still got trouble, and I haven't figured out a really good way to cope with it. The lid panel, because of its width, is going to have as much as 1/4 inch of movement with the seasons — but the breadboard ends have none. Thus, for a good part of the winter, the ends protrude beyond the panel, and for much of the summer the panel swells out of the ends.

— JACK WARNER

What's a sensor?

The stack sensor on an oil furnace is a safety device which prevents the furnace from overflowing. It is located in the chimney. Repairs to the sensor are a job for a professional, but you should remove the sensor from the pipe at least once during the heating season to clean it and to examine it for evidence of a poor oil-air mixture.

You will need a small brush, screwdriver and soapy water. It should take about 10 minutes.

1. Locate the stack sensor on the side of the furnace pipe which leads from the furnace to the chimney. The stack sensor usually is a square box mounted on the pipe with screws. Do not confuse it with the draft regulator, also mounted on the stack. The draft regulator is round and has an adjustment knob on the outside.

2. Remove the screws which hold the stack sensor to the stack.

3. Pull the sensor straight out. You will see a long, round probe sticking into the stream of gases in the stack.

4. If the sensor hasn't been cleaned in three or four months, you can expect it to be covered with a light coating of black soot. If you find a heavy coat of soot, call your service man, because the heavy soot is an indication that the burner is receiving an improper mixture of oil and air.

5. Use the brush and soapy water to clean the sensor.

6. Reinsert the sensor into the stack and replace the screws which hold it.

7. Do not attempt to repair or adjust the sensor, or to open the sensor box. This is a delicate instrument and requires the services of an expert.

— MANCHESTER HERALD, Thursday, March 15, 1984

Special tools make pesky chores easier

By UPI-Popular Mechanics

You don't have to be a totally committed woodworker buff or master craftsman to take advantage of some of the unusual shop tools available that help make certain pesky woodworking chores a lot easier. Despite all the money spent by tool manufacturers to advertise their products, many people simply aren't aware of some very useful tools.

Selected here are a few out-of-the-ordinary hand tools that can help you in your shop projects. Experienced woodworkers and carpenters have used these tools for years. Some can be found at your local hardware store or home center. Others must be ordered from any of the hundreds of woodworking supply houses across the country.

One of the paradoxes of woodworking, it seems, is that most woodworkers have good-sized hands. Consequently, a relatively easy task — such as starting 1/4-inch brads and smaller — is often a nuisance job. But it won't be if you work with the right tools and follow the

proper procedures.

The two tools most used for driving brads are a French joiner's hammer and a brad pusher or driver.

The French joiner's hammer is claimed to be a favorite among Europe's craftsmen. The hammer is square-faced, making it an excellent tool for driving small nails and brads in tight, confined quarters. The square face allows the hammer to deliver full-driving force to the brad even if the brad head does not hit the exact center of the hammer head. The back of the hammer head tapers down to form a narrow striking surface. This end, called the cross-peen end, helps to start a brad or small nail. The narrow striking surface of the cross-peen end fits between your thumb and forefinger used to hold the brad. Once the brad is started, turn the hammer around and finish driving it with the broad, square face.

The French joiner's hammer is a perfect tool for anyone who needs to drive brads in corners or along a perpendicular surface. One word of caution: The French joiner's hammer is light-weight and not for pounding large nails.

A brad pusher or driver is used for driving very small brads such as 1/4, 1/8 and 1/16-inch lengths. A handy feature on the brad pusher is that the tip is magnetized, making it a snap to pick up even the tiniest brad. The brad pusher resembles an awl except that the long steel shaft is ground flat and is encased in a spring-loaded steel sleeve.

To use, simply dump the brads onto the workbench and use the magnetic tip to pick up one brad. The sleeve must first be retracted to expose the tip. Then, release the sleeve so that the brad is held in place. Now hold the pusher on the point you wish to drive the brad and push downward on the wood handle. The blunt-end shaft drives and sets the brad in one operation. This is an especially helpful tool when you have a lot of brads to drive.

The third tool, a cat's paw, is a descendant of the crow bar and is designed specifically for pulling out driven nails. The name is derived from its shape — a long steel bar outfitted with a sharp, curved claw.

The claw is split, not unlike a carpenter's hammer, and is used for driving under the head of the nail. The cat's paw is used only on rough carpentry and framing because some damage is done to the wood surrounding the nail.

To use it, first position the paw as close as possible to the nailhead with the tool's bar (handle) held at a 45-degree angle. Then strike the paw with a hammer so that the claw will dig into the wood beneath the nailhead. Now, pull back on the

handle to extract the nail. The cat's paw is an essential tool both for home remodeling and new construction.

The final tools are cabinet scrapers. These consist of nothing more than a piece of sheet steel with a sharp edge. Scrapers reduce the time spent sanding a piece of wood smooth.

A cabinet scraper is held between thumbs and index fingers and the blade is dragged across the board's surface. The tool is most often used with a pulling action, but

it's perfectly acceptable to push scrapers across the board as well. Use cabinet scrapers in those difficult-to-sand spots where cross grains meet, and sandpaper always leaves cross-scratches. Using a cabinet scraper you can start at the point where the two cross-grains meet to avoid scratches.

Cabinet scrapers are available in a variety of shapes for smoothing different contours and profiles. They are helpful when removing paint from old moldings and intricately carved pieces of furniture.

Repairing wicker furniture

By UPI-Popular Mechanics

If you've ever wondered whether it's possible to repair wicker furniture yourself, the answer is yes, reports Popular Mechanics.

With the right materials, a little patience and a few helpful tips from the pros, anyone can restore old wicker furniture to like-new condition. Standard hand tools are

all that are required. They include an upholsterer's hammer, needle-nose and bent-nose pliers (excellent for getting in between reeds), wire cutters, razor knife, narrow blade chisel, screwdriver and clear hide glue.

The first step is to buy reed and cane that matches the missing and damaged strands. Wicker suppliers and caneing shops are listed in your local telephone directory.

Repairs are often made with sturdy rattan reeds and cane. Reeds are full rounds, split rounds or flat paper, which is twisted kraft paper.

Repairs are often made with sturdy rattan reeds and cane. Reeds are full rounds, split rounds or flat paper, which is twisted kraft paper.

Please turn to page 10

Wouldn't your rooms look beautiful in California?

E.A. JOHNSON PAINT CO.



Our complete line of interior acrylic latex paints are quick and easy to clean up and they dry to a hard scrubable finish. What's more, California paints come in hundreds of colors. And they all cover virtually any surface in just one coat. California makes only one grade of interior paints — the very best.

California
The best paint in the East.

723 MAIN ST., MANCHESTER 649-4501

A. Raymond Zerio & Sons, Inc.

• CERAMIC TILE • LINOLEUM
• SLATE • CARPET

Remember Us When You Spruce Up For Spring

431 New State Rd. Manchester
643-5168

"We are part of Manchester. Watch Us Grow..."

"THE HARDWARE PEOPLE" F.T. BLISH "THE HARDWARE PEOPLE" "THE HARDWARE PEOPLE" F.T. BLISH

Cook & Dunn's EARLY BIRD PAINT SALE

QUALITY SAVINGS UP TO \$7.00 GALLON

<p>A premium quality Interior Latex Flat that outperforms the very best of the National Name Brands in an independent laboratory test. The very best - now price reduced to save you money! 100 Decorator Approved Colors.</p> <p>reg. 16.99 NOW ONLY \$9.99</p>	<p>Better quality than others in its price class, the Interior Latex Flat is "Sale Price" to make it an even bigger bargain. Available in 100 beautiful colors.</p> <p>reg. 12.99 NOW ONLY \$7.99</p>	<p>Latex Texture Paint turns your room into something brand new. Shape your own designs for creative fun and decorative flair. Conceals cracks and blemishes. Easy clean-up with soap and water.</p> <p>reg. 13.99 NOW ONLY \$9.99</p>	<p>The convenience of latex with the durability of an enamel. Kid-proof for hard use rooms, woodwork, kitchens and bathrooms. 100 colors to match or contrast with our One Coat, No-Dip Latex Flat.</p> <p>reg. 19.99 NOW ONLY \$14.99</p>
<p>An economy-priced latex semi-gloss. Ideal for walls and woodwork. Dries quickly to an attractive, durable finish that's completely washable. 100 beautiful colors.</p> <p>reg. 15.99 NOW ONLY \$11.99</p>	<p>Looks like a flat but scrubs like an enamel. The "easy care" finish that sheds finger prints, grease and grime. 100 lovely colors plus Non-yellowing Whites.</p> <p>reg. 17.99 NOW ONLY \$13.99</p>	<p>SPECIAL OFFER ★</p> <p>Bring This Coupon to BUSH HARDWARE for A FREE KEY</p> <p>1 per customer expires 3-31-84</p>	

"THE HARDWARE PEOPLE" F.T. BLISH "THE HARDWARE PEOPLE" F.T. BLISH

"THE HARDWARE PEOPLE" 783 Main St., Manchester, Ct. 643-4121
STORE HOURS: MON - FRI 9:30 TO 5:30 OPEN SATURDAY 9:30 TO 4:30

F.T. Blish Hardware
MANCHESTER'S OLDEST, SINCE 1886

FREE PARKING IN THE MARCH ST. LOT
MasterCard VISA
WE DELIVER SATISFACTION GUARANTEED

Books to help woodworkers

By Jack Warner
United Press
International

ATLANTA — The woodworker looks to his books for inspiration as well as instruction, and it is rare to find both qualities in a single volume.

The literature can roughly be divided into three categories — general instruction, plans and particular instruction, and autobiography.

I've already made clear my favorites, but many readers who missed that column have inquired about books, and some outstanding new ones have been published since then.

The finest of the inspirational books remain the four volumes by James Krenov — "A Cabinetmaker's Notebook," "The Fine Art of Cabinetmaking," "The Impractical Cabinetmaker," and "Worker in Wood," all from Van Nostrand Reinhold. These books, especially "Fine Art," also contain a fair amount of

advanced instruction, but they should be purchased and read primarily for their philosophy and inspiration.

Last fall there appeared a stunning book called "Sam Maloof: Woodworker," published by Kodansha, the Japanese firm that also brought out a few years ago George Nakashima's "The Soul of a Tree."

The Maloof book is truly a triumph of the publisher's art, like nothing else you have ever seen. The California craftsman and his work are presented dramatically, from every possible angle.

Maloof's story is the dream, I suppose, of every amateur — the untrained home craftsman who made it big. He works in his own peculiar way, using methods you won't find in any of the how-to books. He has accumulated a large room of bench tools, many of which he appears to use as workbenches. The only workbench shown in the hundreds of photographs in the book looks as though

it was rescued from a beaver dam.

Maloof is warm, thorough and entirely free in discussing his methods; one pictorial series takes the reader through every step in the construction of one of his immaculate, \$2,000 rocking chairs.

The book belongs on the shelf of every serious woodworker who can come up with \$50 for it. There are a lot of \$50 books on the market these days, and this is one of the few that is worth every penny of it.

I cannot quite say the same for the Nakashima book, another \$50 item. The book is beautifully done — not as gorgeous as the Maloof, but then none is — and my problem seems to be with Nakashima himself.

The lengthy autobiographical section is interesting, as are the parts on sawing logs, but the man offers the aspiring woodworker more platitudes than useful advice, and his work does not move me as does Krenov's and Maloof's, although I am

usually a sucker for anything Japanese. I was left with an impression not so much of a great woodworker but a sort of hardwood Midas — pictures of him in one of his woodsheds, dwarfed by gargantuan sections of walnut, are almost surreal.

I can heartily recommend a little book called "The Nature and Art of Workmanship" by the British woodworker and aesthete David Pye, published by Cambridge University Press. Pye looks at all major crafts, not just woodworking, in a modern context and comes to the conclusion that in most of them the very finest work must now be carried on by the amateur. None but a handful of professionals, he contends, can afford to devote vast amounts of time to a given piece; the amateur does not have that problem.

His basic argument is that there is no justification for amateurishness in the work of the amateur, who works for love.

Insulate crawl space

If your home doesn't have a basement, you should insulate the underside of the floor over the crawl space. For this job, buy either insulation batts or blankets that have a vapor barrier built into one face. The best type of barrier is metal foil.

You will need insulation batts or blankets with vapor barrier built in, a staple gun and chicken wire.

The time it will take depends upon the size of the area.

1. The method used in this job is to stuff the insulation batts or blankets up between the floor joists and then to staple a light wire mesh (called chicken wire) to the joists to support them.
2. Insert the insulation with the vapor barrier on the top, close to the floor of the house.
3. Before buying the insulation material, measure the spacing between your floor joists. It should be either 16 or 24 inches from the center of one joist to the center of the next.
4. Begin by folding one end of a batt or blanket and inserting the folded end into the space at the end of the run between the joists.
5. The insulation will stay in place without support, allowing you to place the chicken wire under it and staple it to the joists. You can insert several runs of insulation, then staple chicken wire over all at one time.
6. Butt the ends of batts or blankets together to assure a tight insulation job.

10 — MANCHESTER HERALD, Thursday, March 15, 1984

Use of squares is important first lesson

By UPI-Popular
Mechanics

One of the first things a beginning woodworker must learn is how to properly prepare stock for use in any building project. This lesson must include the proper way to use the three major types of woodworking squares: Try square, miter combination, and the T-bevel square. Without these valuable tools, smoothing stocks and making the ends square — or precisely beveled, depending on need — is nearly impossible. Professionals always start a project by

checking the squareness of the edges in relation to the surface of the boards. This is a habit everyone should acquire because it will make many of the ensuing procedures easier.

The angle used most often in carpentry, cabinet and furniture making is the basic right angle — 90 degrees. And the most basic tool to get this angle is the try square. This tool consists of a heavy wooden or metal handle firmly attached to a steel blade of varying length, commonly from 4 to 10 inches long. The handle is de-

signed to act as a right-angle fence while the blade is graduated into inches and fractions of an inch. Generally speaking the try square is used for the following three tasks:

First, to test a surface or an edge for identical thickness throughout its length; second, to check an edge or surface for squareness with its adjoining edge or surface; and third, to serve as a guide for marking a line perpendicular to the edge or surface on which the handle is resting. The great advantage of this tool is its rigid construction. If it is treated with

care, as all squares should be, it will remain square indefinitely.

The combination square is more versatile than the try square, and because it is a multi-purpose tool it should be the first one for the beginner to buy. The tool consists of a triangular shaped metal head that is slotted to receive a thin straight blade, marked in fractions of an inch. The head can be relocated anywhere along the blade — and tightened in place — which lets you use the tool as a marking gauge. Also the head is shaped in such a way that both

90- and 45-degree angles can be easily, and accurately, marked. Other built-in bonuses in a quality combination square include a spirit level bubble and a sharp-pointed scribe for marking hardwood and metal.

There is one very important thing to keep in mind when using a T-bevel square: No matter what type of bevel square you buy — one that locks using a thumbscrew or one with a knurled nut — the locked position is not positive. Even after the nut has been turned home, the blade camoth a reasonably small amount of

force. For this reason, always recheck the angle once the blade has been tightened in place to make certain that it is accurate. Then check it again after you have marked your workpiece to make certain that the angle did not change during the transfer.

A fourth type of square that is less common in shop work but is required equipment in framing and much finish carpentry is the framing square. This tool is shaped like a try square in that it forms a rigid right angle, but the similarity ends there.

Balance your heating system on a cold day

Your warm air heating system may be working properly but you will still find some rooms colder than others. The problem in this case is that the system isn't balanced. This means that some rooms are getting too much warm air, while others are not getting enough. Balancing the system simply means that you adjust the air flow so that each room gets the amount of warm air it needs.

You will need wall thermometers for each room in the house.

1. The balancing is done best on a cold day when the wind is not high.
2. Set the thermostat at the usual comfortable setting and leave it there long enough for the

temperature through the house to stabilize.

3. Turn the blower switch (inside the burner compartment of the furnace) to ON, so that it runs constantly.

4. Place a thermometer in each room. Best location is in the center of the room, about two feet off the floor.

5. After an hour or so, begin taking readings from each thermometer, then compare the readings. Some rooms will likely be cooler than others. To correct this, you should increase the flow of warm air to the cold rooms, and decrease it to the warm rooms.

6. Air flow is controlled in two ways: Dampers are located in all air ducts and are opened or closed by turning a wing nut on the bottom side of the duct.

These dampers are usually located in the basement duct runs, near the furnace. Or each warm air outlet can be opened or closed. It is best to adjust the basement dampers.

7. Locate the dampers which need to be adjusted and open or close them, as required.

8. Wait half an hour to an hour, then take a new set of thermometer readings. See which rooms need further adjustment. The tricky part is that when the air delivery is reduced to some rooms, it automatically increases to others. Thus your first adjustments may produce a completely different set of readings.

9. You may have to make three or four sets of adjustments before the system comes into balance.

You can restore old wicker to look new

Continued from page 9

ovais. The rounds and split half-rounds are used to weave chair arms, chairback rims and areas where a thick weave is needed for a little extra support and strength.

Cane is flatter and more flexible than reed. Cane and flat oval reeds are used to wrap chair legs and cross-supports. Cane is also a popular choice for weaving intricate, decorative chair seats.

To prepare your pur-

chase order, measure the diameter of the reeds and the width of the cane used in the damaged areas. Reed sizes for weaving range from 1/4-inch to 1/2-inch diameter.

Cane width is measured in millimeters. Wrapping cane ranges from 1 1/4 mm (1-16-inch) to 6 1/2 mm (1/4-inch). It's always a good idea to send a sample of the old canes and reeds when you order; many suppliers will try to match it.

Before you begin work,

soak the new reeds and canes in water for 24 hours to make them supple and easy to work with. Also, sponge or hose down the piece of furniture you're repairing. Leaving the piece under a running showerhead for 10 minutes works fine.

Before you start cutting away and removing any damaged wicker, study the waves and braids carefully. When you begin work, cut, wrap, weave and clip the reeds and cane to follow the same

design, style and technique used throughout the piece. Use small flathead tacks to secure the end of a long cane wrap or the last reed in a braid.

Once you've finished repairing an area, or after the completion of the project, apply clear hide glue to help strengthen tightly woven reeds. Then, make any final adjustments to the reeds before the glue sets.

Once the damp reeds and glue have dried, you can apply the finish of your choice, if desired.

The two most popular finishes are polyurethane and paint. If paint is chosen, be sure it's a high-quality, fast-drying finish. Apply the paint with a power sprayer or can of spray paint to ensure total coverage and a uniform finish. Remember, it's better to apply several light coats, building up the protective finish slowly, rather than applying one heavy coat.

At points where the weaving serves as the furniture base and the glue secures the weaving, apply paint generously to provide additional support.

The major cause of wicker furniture becoming weak and falling apart is lack of moisture. The reeds and cane dry out and soon become too brittle to support weight. So, once a year re-soak your wicker furniture

with water for 10 minutes. This will help restore lost moisture and extend its useful life. If your wicker furniture is used outdoors,

let the rain soak it. But during severely cold winter months move the wicker indoors to prevent freezing.



WHEN YOUR
DECORATIVE REQUIREMENTS
ARE
IMAGINATIVE AND SOPHISTICATED
COMBINED WITH
PRACTICALITY AND COMFORT

IT HAS TO BE

INTERIORS UNLIMITED

383 HEBRON AVE.
GLASTONBURY
659-0303

Complete Design Service Residential • Commercial

The elbow is major part of downspout

The elbow assembly is a major part of assembling a downspout. To make the installation:

1. Determine the kind of elbow assembly necessary.
2. Fit the top elbow to the bottom of the drop outlet on the gutter. The elbow should turn toward the house wall.
3. Drill a pilot hole through each side of the elbow about 1 1/2 inches down from the bottom of the gutter.
4. Insert a self-tapping sheet metal screw into each hole and tighten with a screwdriver.
5. If a straight member is required, fit it to the bottom of the elbow just installed. If it is not, then fit the second elbow in place on the first elbow, pushing the flared end of the second elbow over the lower crimped end of the first elbow. Complete connection by installing sheet metal screws as described in Steps 3 and 4.
6. Install the downward run of downspout, connecting it to the elbow by fitting the flared end of it over the crimped end of the elbow.
7. The length of the downward run is determined by the height of the wall, the distance from the bottom of the elbow assembly to the ground, and also the assembly made at the bottom of the downspout.
8. An elbow should be used at the bottom of the downspout assembly, pointed outward from the wall, to turn the runoff water away from the house. The bottom of this elbow should be approximately 3 inches above ground level to allow for installation of a concrete splashback unit.

The length of the downward run is determined by the height of the wall, the distance from the bottom of the elbow assembly to the ground, and also the assembly made at the bottom of the downspout.

9. In some cases, the run-off water may be directed into a storm sewer inlet beside the house. Many local building codes now require that storm water from a gutter no longer be fed into the storm sewer, and, instead, that the water be directed across the yard. If your building code permits it, run the downspout to the storm sewer inlet (a clay pipe set in the ground next to the house). Run the downspout into the top of the sewer pipe. Mix some cement mortar and seal the downspout into the pipe with the mortar.

The first practical fountain pen was invented and manufactured by Lewis Edson Waterman 100 years ago. Originally they were made by hand in his New York factory.

J&M
LINOLEUM & CARPET, INC.

- NO-WAX FLOORS
- CARPETING
- CARPET CLEANING
- CERAMIC TILE

20% OFF SELECTED
MANNINGTON NO-WAX FLOORS

CONGOLEUM SALE: MARCH 26th to MAY 11th
TARKETT SPECIAL: MARCH 26th to APR. 30th
***FREE \$100* SAVINGS BOND WITH PURCHASE OF 15 SQ. YDS. OF 7500 OR 6700 SERIES.**
FREE ESTIMATES

J&M Linoleum & Carpet, inc.

OPEN:
10-F 12-5
Th 10 9 p.m.
Sat. 10-4

**405 CENTER ST.
MANCHESTER, CT. 646-2809**

SAVE BIG ON EVERY BOOK, EVERY BRAND,
EVERY PATTERN WE SELL!

**SPRING
WALLPAPER SALE**

SAVE A
MINIMUM OF..... **30%**
and
UP TO..... **70%**

OFF MANUFACTURER'S LIST PRICES

NOTHING
HELD
BACK!

NO FANCY
SALES
GIMMICKS!

JUST GOOD HONEST VALUE!

**ALL SALES CASH, CHECK, MASTER CHARGE OR VISA
NOW THRU 4-14-84**

**SIGN UP FOR A STENCIL CLASS BY SAT. MARCH 24, 1984
NEXT CLASS MARCH 29, 1984 CALL SUE FOR DETAILS**

MANCHESTER WALLPAPER & PAINT

185 West Middle Turnpike Manchester 646-0143
SERVICE • SAVINGS • SATISFACTION
Manchester's Leading Paint & Wallpaper Store
Brings You The Best For Less

**DO • IT •
YOURSELFERS**

SALE STARTS TODAY • SALE ENDS MARCH 22, 1984

**CLEAN UP
FIX UP!**

**ALL LOUVERED
BI-FOLD DOOR UNITS
STOCK IN SIZES....**



Bi-Fold Doors

Luton		Louver	
2/0x6/8	23.85	2/0x6/8	44.70
2/6x6/8	26.55	2/6x6/8	48.95
2/8x6/8	29.45	2/8x6/8	50.95
3/0x6/8	30.45	3/0x6/8	55.00
4/0x6/8	47.50	4/0x6/8	87.65
5/0x6/8	50.65	5/0x6/8	98.40
6/0x6/8	56.10	6/0x6/8	108.15

Top Quality Paneling

**SALE ★★
PANELING**

SALE



**Natural Veneer
& Prints**

	Reg.	SALE
Firelight Friendship Birch	17.25	14.95
Woodstock Oak	12.59	9.83
Valley Forge Nat. Birch	17.30	14.35
Front Street Birch	17.30	14.35
Ginger Birch	14.15	11.09
Terrace Pecan	11.98	9.35
Terrace Light Birch	11.98	9.35



WOOD SLIDING DOORS

WITH SCREEN
BEST QUALITY 4' x 8'
\$398

PRIMED EXTERIOR WITH CLEAR PINE INTERIOR. IDEAL FOR STAIN OR PAINTING. 1" THICK TEMPERED INSULATED GLASS. REVERSIBLE FOR RIGHT OR LEFT HAND OPERATION. 1ST QUALITY

THE
W. H. ENGLAND

ROUTE 44A, BOLTON NOTCH
JUST MINUTES FROM MANCHESTER Tel. 649-5201
PROMPT DELIVERY AVAILABLE

CASH
AND
CARRY

Lumber

COMPANY
MONDAY THRU FRIDAY
7:30 - 5:00
SATURDAY 8:00 to 4:00



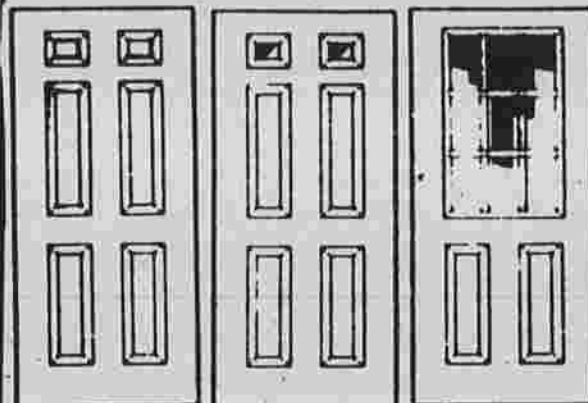
VERMONT BARNBOARD

- AUTHENTIC BARNSIDING LOOK
- KILN-DRIED TO PREVENT WARPING
- DURABLE IN ALL CLIMATES
- SHIP LAP BOARDS

\$24⁹⁰

PER BUNDLE
24 sq. ft. COVERAGE
Available in Gunstock
Brown and Weathered
Gray.

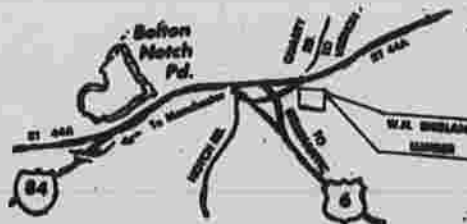
**PRE-HUNG STEEL
INSULATED DOORS**



STYLE K-1	STYLE K-2E	STYLE K-4E
2-8x6-8 154.90	3-0x6-8 181.90	2-8x6-8 212.40
3-0x6-8 157.25		

Embossed steel entry doors completely weather stripped, deeply embossed to give the appearance of hand carved entry's.

Lockset Extra



12 - MANCHESTER HERALD, Thursday, March 15, 1984

**Man's de
investiga
in Cover**

COVENTRY - State police are investigating the "timely" death of a Coventry resident, who apparently occurred sometime yesterday afternoon at a lake on Main Street, according to sources.

The victim is William 31, who police said died at 2283 Main St., a white Coventry Lake that a neighbor shared with its owner Stevenson, and her family.

Police were dispatched to Stevenson home, where they reported lying in the yard they arrived on the scene roped the house off from one neighbor said.

No arrests have been made in connection with Chappell's death. Coventry police Lt. Doughty said there was no evidence on Chappell's body but the source of the wound was not known. An autopsy was performed this morning by a state medical examiner in Farmington, police said.

"We don't necessarily have foul play, but we're conducting an investigation as if that's the case," said Doughty.

Police sources said police Major Crime Unit was called in to help investigate the scene about 9 p.m.

A neighbor, Orin Miles, said that his wife heard what sounded like a gunshot at about 1 p.m. Thursday.

Mrs. Stevenson and her sons declined to discuss the incident. Miles remembered the victim as "a good kid, a nice kid, called Mrs. Stevenson's 'lady.'" He said the Stevenson family and Chappell were good neighbors.

"They don't bother me," Miles said. "Any problems we have is amongst them."

**Lotto sales
in state
soaring**

HARTFORD (UPI) - Lottery fever, brought on by a \$5 million drawing, could boost this week's sales to more than four months' weekly average, an official said.

"I think it will be a record to handle this week," said Ziemak, assistant chief of the state's Lottery Unit.

"Tomorrow will be a really big day. About 8 million was done on the last day of the drawing. It's been a record today after lunch," Ziemak said.

He said ticket sales were up 20 percent from a weekly average of \$600,000 in December to the first full month of sales, about \$700,000 in February.

But the past six weeks have not produced a winner, raising the week's first-prize pool and sending last week's sales to \$1.29 million.

He estimates the first prize for tonight's drawing is \$6 million, but it's still a long way from \$10 million.

Sales boosted by a drawing for a record \$10 million Megabucks pool in Massachusetts, Ziemak said.

Lotto players put up six numbers from 1 to 49.

Cloudy tonight
some sun Saturday
- See page 12